



TUNITAS CREEK BEACH IMPROVEMENT PROJECT

PREFERRED CONCEPTUAL DESIGN

December 2020





INTRODUCTION



About the Project

Tunitas Creek Beach will become San Mateo County's newest park! The site is 58 acres, with lots of interesting history, incredible views, and a huge beach. In order to ensure the property functions safely and is protected for future visitors, we are working with the community to create adequate parking facilities, restrooms, trail access to the beach, ranger facilities, and an iconic overlook area.

Project Progress

In May, the project team posted a general survey to gather information about where respondents are from, what their values are, and how they use Tunitas Creek Beach.

Shortly after, we presented information and graphics about the existing conditions of the site and three proposed design scenarios. From July-November, the team collected input and feedback on the direction of the alternatives and hosted community meetings in English and Spanish. The feedback was used to further refine the preferred project plan.

Where We Stand Today

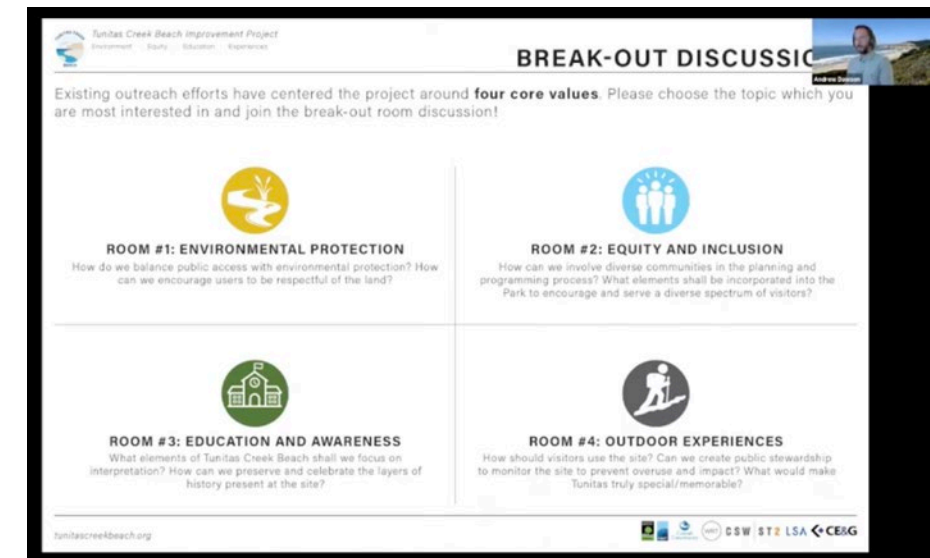
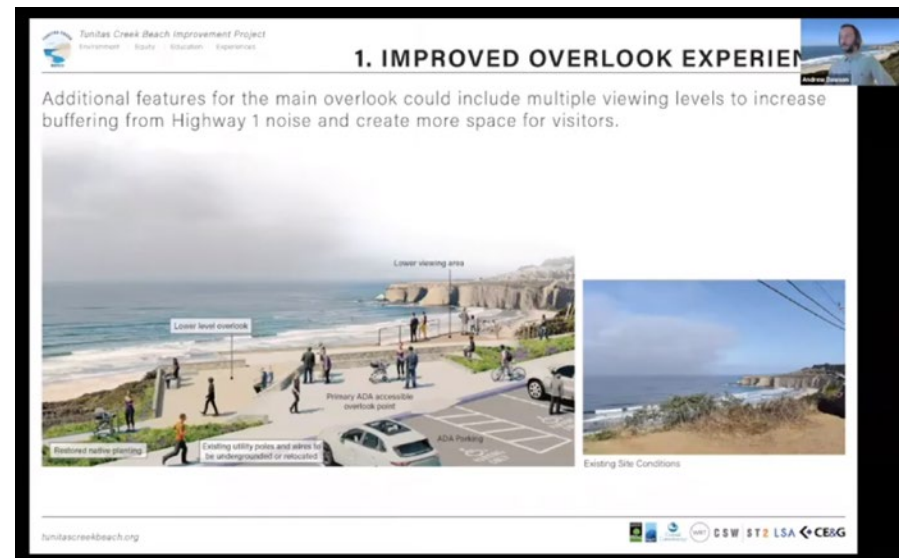
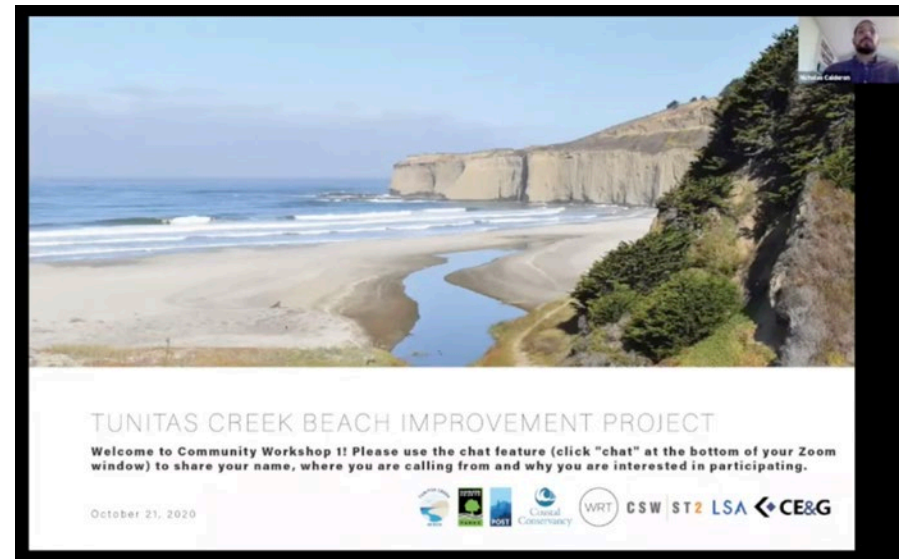
This presentation will:

1. Summarize what we heard in the last round of public input
2. Present the direction of the preferred conceptual design

VIRTUAL COMMUNITY MEETINGS RECAP

On October 21st and October 22nd, the project team hosted public meetings in English and Spanish to give community members a chance to weigh in on project priorities and potential additional features. Here is some of what we heard:

- The vast majority of community members in attendance were from **San Mateo County**.
- Over **2/3** of those in attendance have been to Tunitas Creek Beach.
- Main priorities for improving the Tunitas Creek Beach experience centered on **land preservation and restoration, easy access to the beach, public restrooms, accessibility, and overnight security**.
- Community members expressed concerns of **overdevelopment, crowding, and security**.

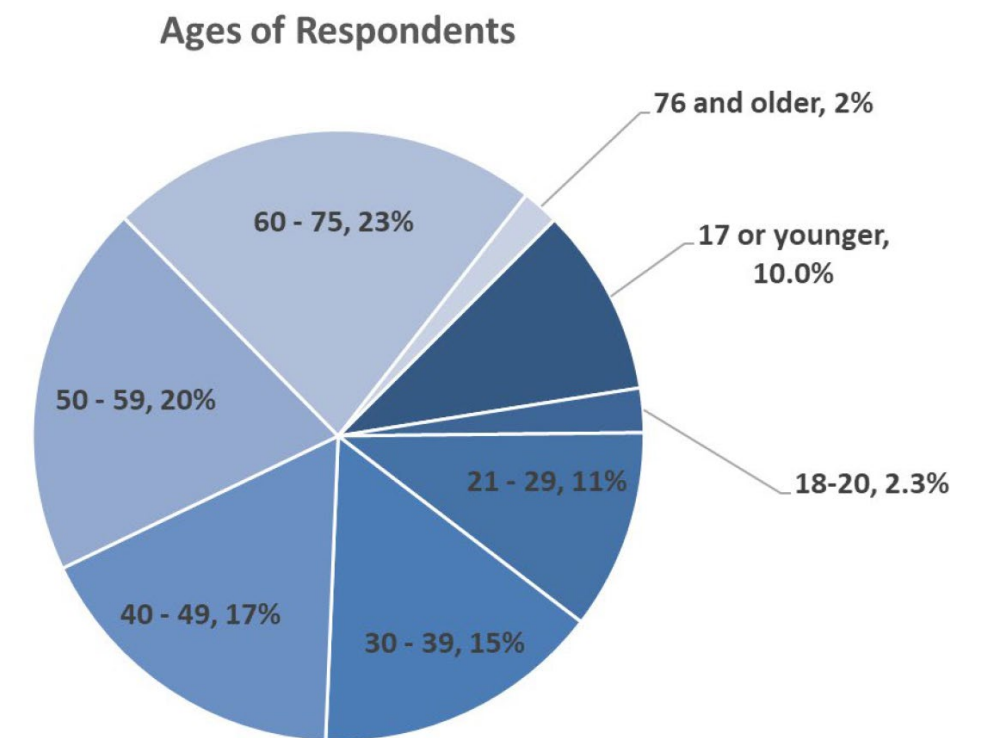
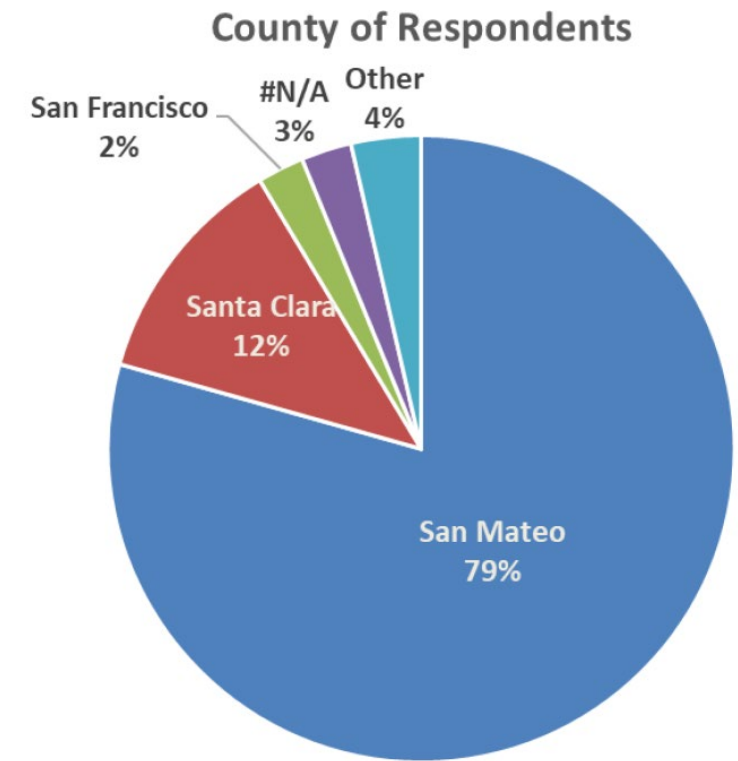


If you were not able to attend one of our Community Meetings, recordings can be found at tunitascreekbeach.org!



WHAT WE HEARD: OUTREACH SURVEY

- 519 survey respondents: 364 English, 155 Spanish
- The majority of responses originated from San Mateo County, many being from the coast side.
- Beyond priority improvements, respondents expressed support for adding **trail seating and overlook (47%), a nature walk (42%), and a space for picnics (40%)**.
- **32%** of respondents preferred **no additional features** beyond the priority improvements.
- Many respondents were excited to see opportunities for **community stewardship programs (62%), wildlife viewing programs (60%), and indigenous peoples cultural events (57%)**.





OTHER PROJECT FACTORS

In addition to public input, the team needed to consider **the following factors** when revising the Project Preferred Plan:

- The **core values** established in the Community Advisory Committee's Vision Report
- **Feasibility and cost** of implementation and management of proposed improvements
- The improvement's impact on the County's ability to **efficiently and effectively manage the Property** as a County park
- Permitting requirements and regulatory constraints
- **Time** needed to construct the improvements
- Impacts to **natural and cultural resources**
- The expertise of the project design professionals
- Impacts on **user experience**

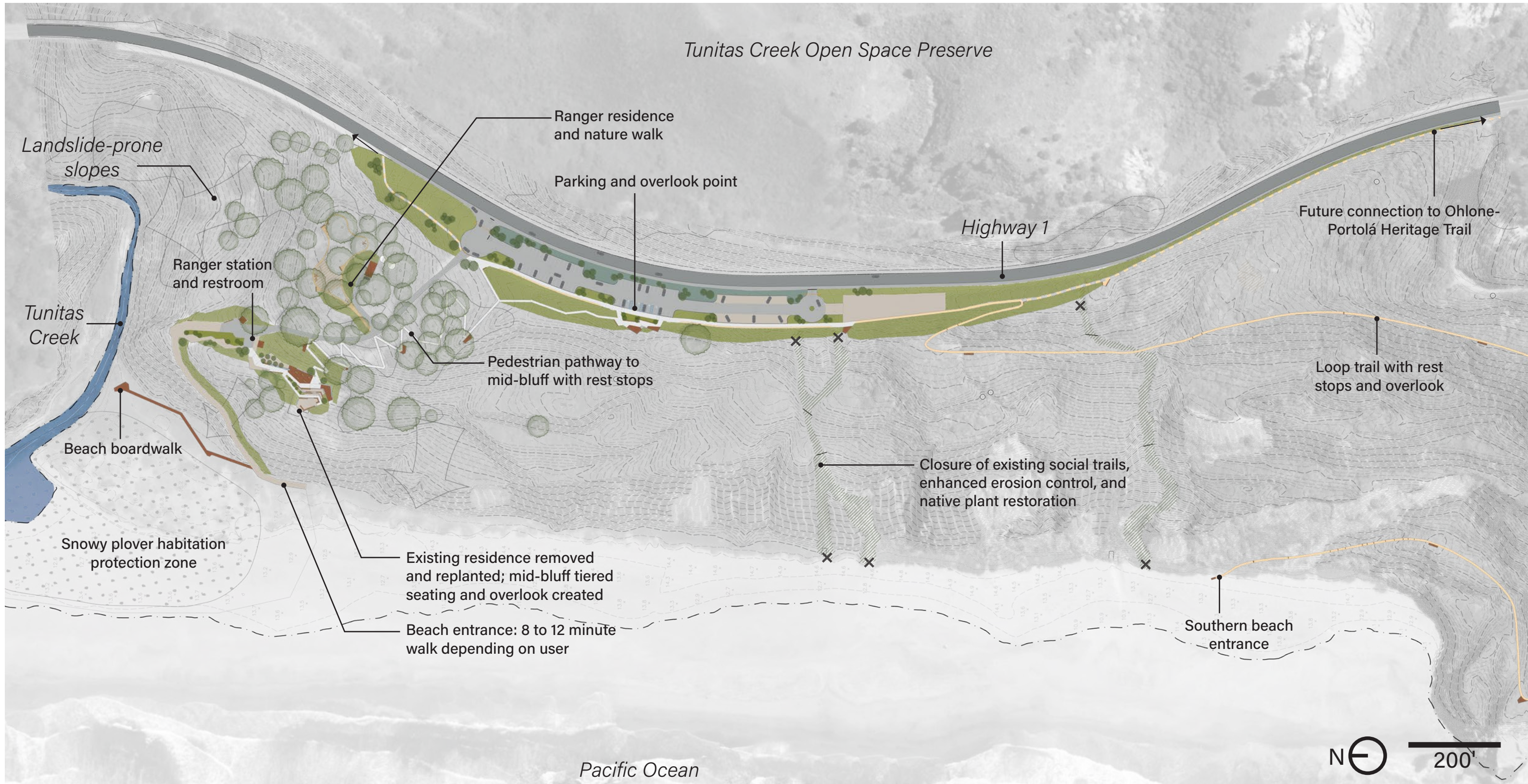


EXISTING SITE



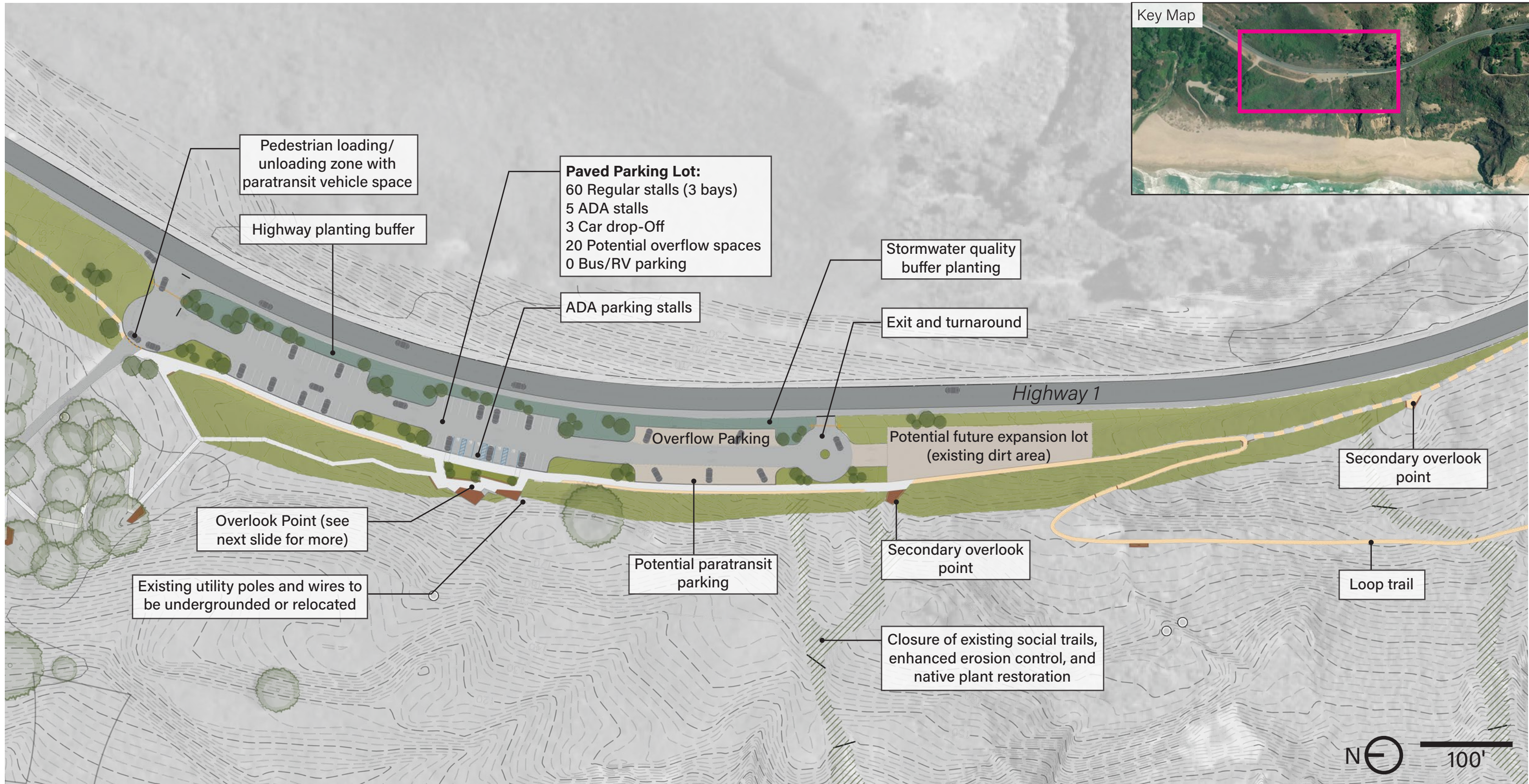


PREFERRED CONCEPTUAL DESIGN



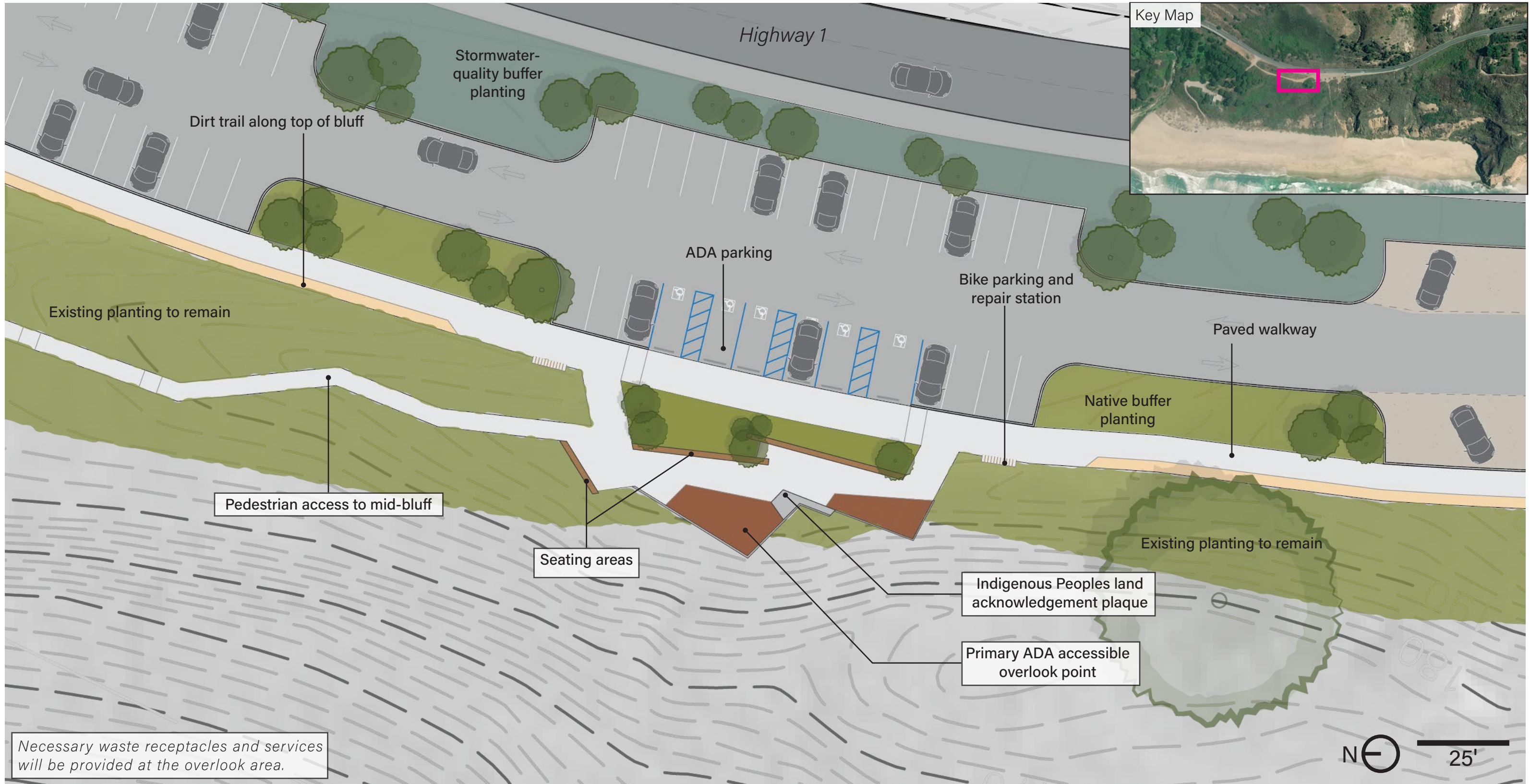


PARKING CONDITION





OVERLOOK POINT





TOP-OF-BLUFF OVERLOOK POINT



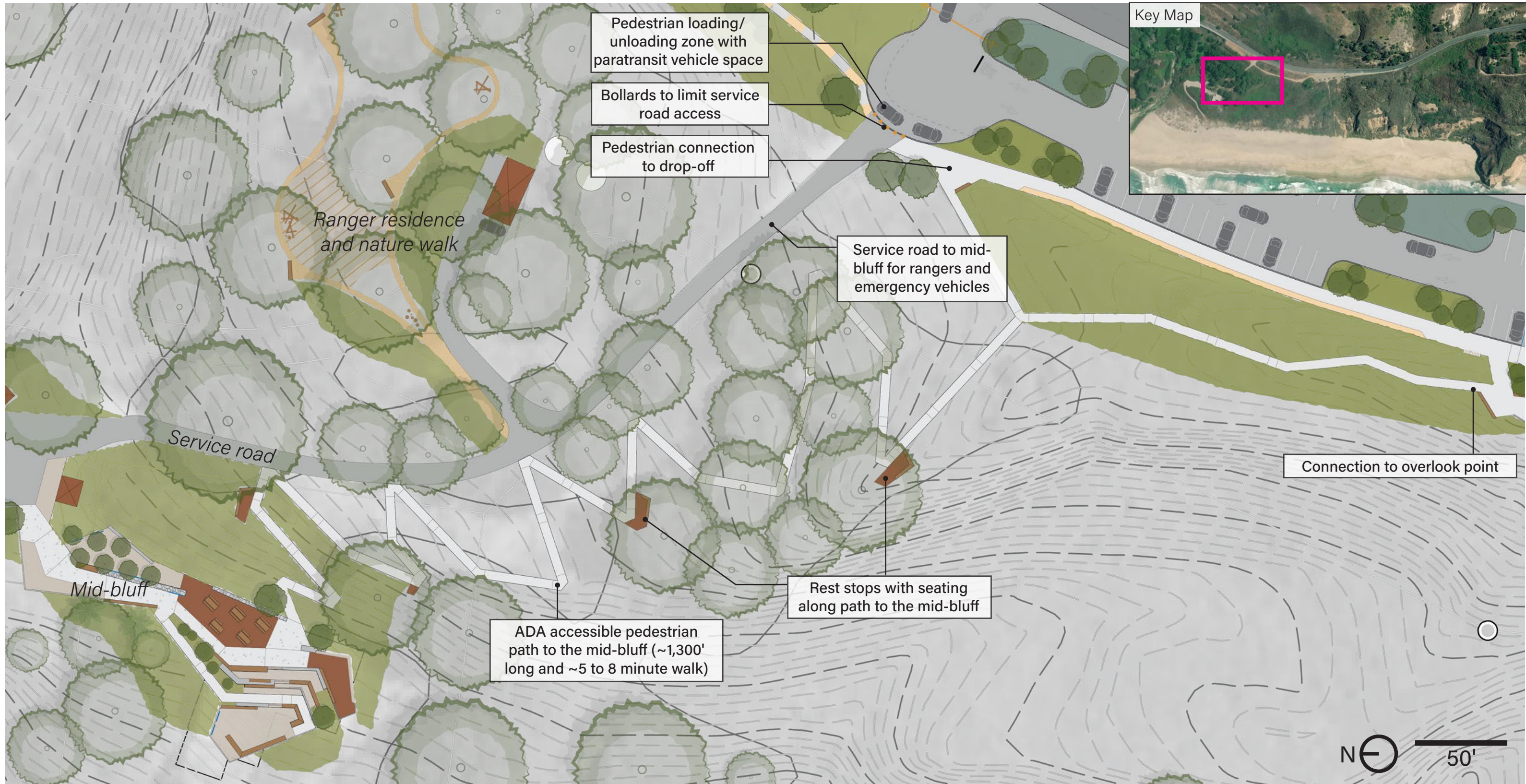
- ① Indigenous Peoples land acknowledgement plaque
- ② Seating areas
- ③ Existing planting to remain
- ④ Paved walkway
- ⑤ Pedestrian access to mid-bluff
- ⑥ ADA Parking
- ⑦ Existing utility poles and wires to be undergrounded or relocated



Existing Site Conditions

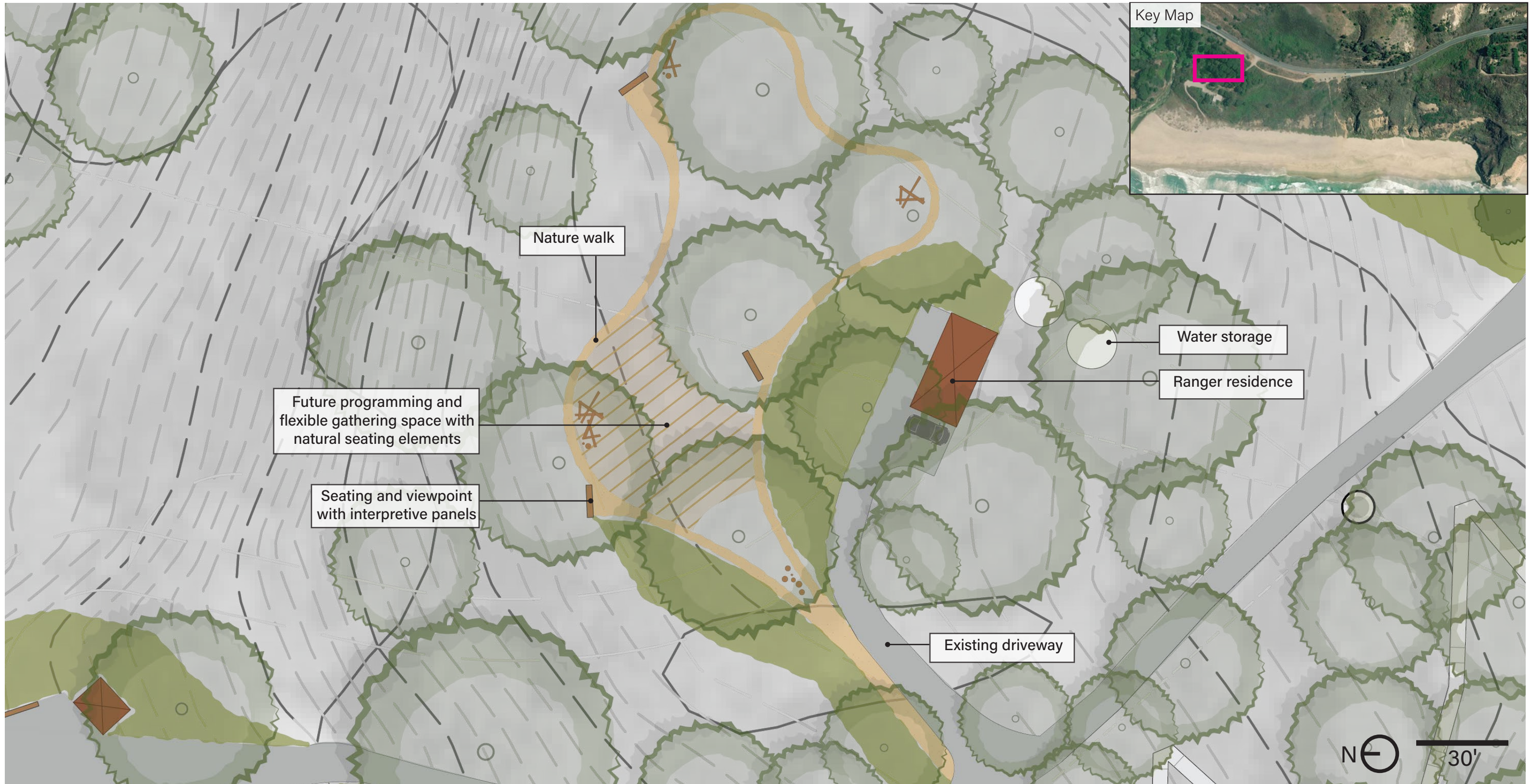


PEDESTRIAN ACCESS





RESIDENCE AND NATURE WALK





MID-BLUFF FEATURES



Necessary waste receptacles and services will be provided at the mid-bluff area.



MID-BLUFF FEATURES



- ① ADA accessible pedestrian path to the mid-bluff
- ② Overlook to beach and southern bluffs
- ③ Tiered seating space, interpretive panels, and overlook point
- ④ Picnic Area
- ⑤ Grove and seating area with interpretive panels
- ⑥ Access driveway for rangers and emergency vehicles
- ⑦ Ranger station and storage area
- ⑧ Public restroom
- ⑨ Restored native planting
- ⑩ Access to beach



Existing Mid-Bluff Conditions



MID-BLUFF FEATURES



- ① Overlook to beach and southern bluffs
- ② Interpretive panels and overlook point
- ③ Tiered seating
- ④ Picnic area



Existing Mid-Bluff Conditions

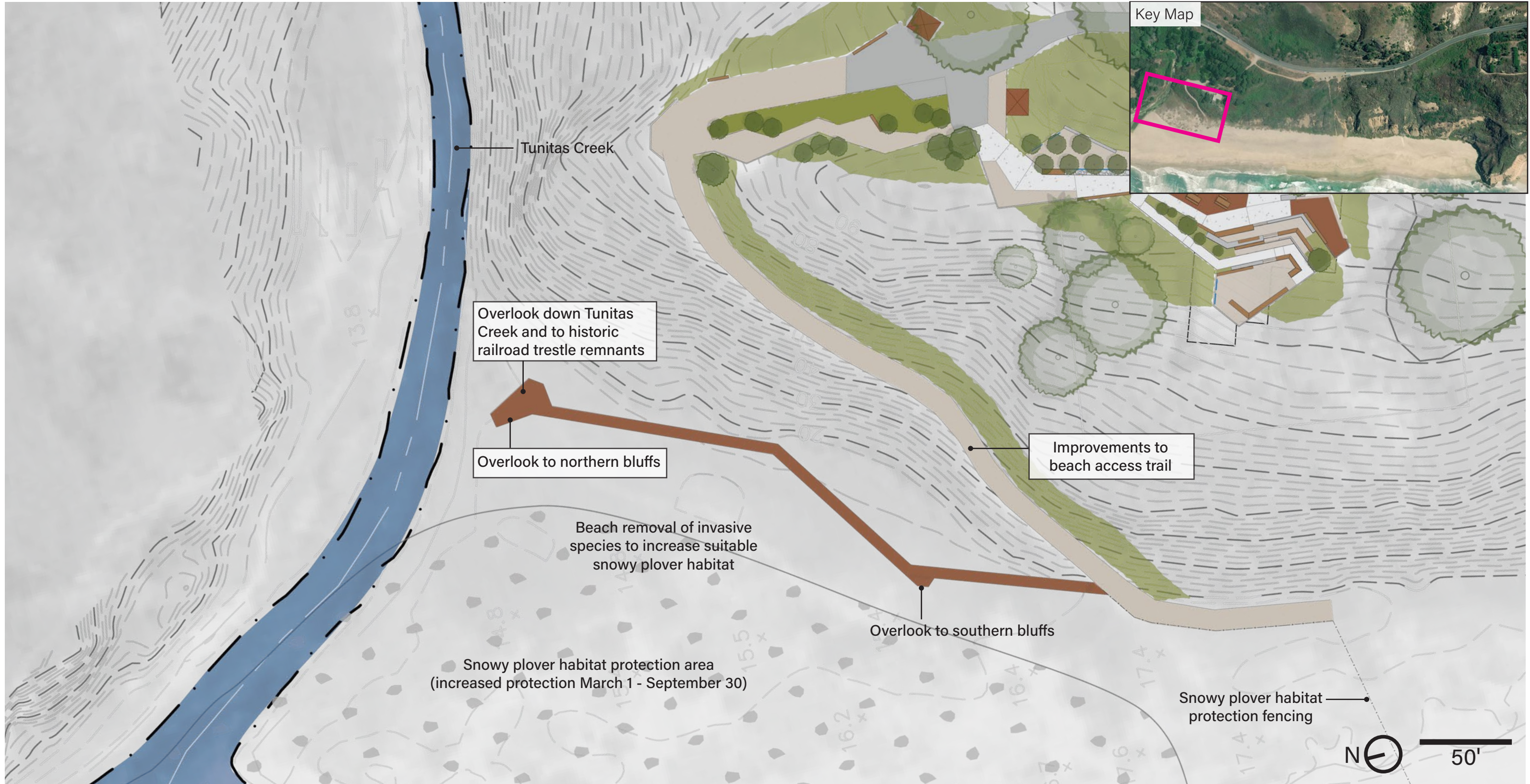


MID-BLUFF FEATURES



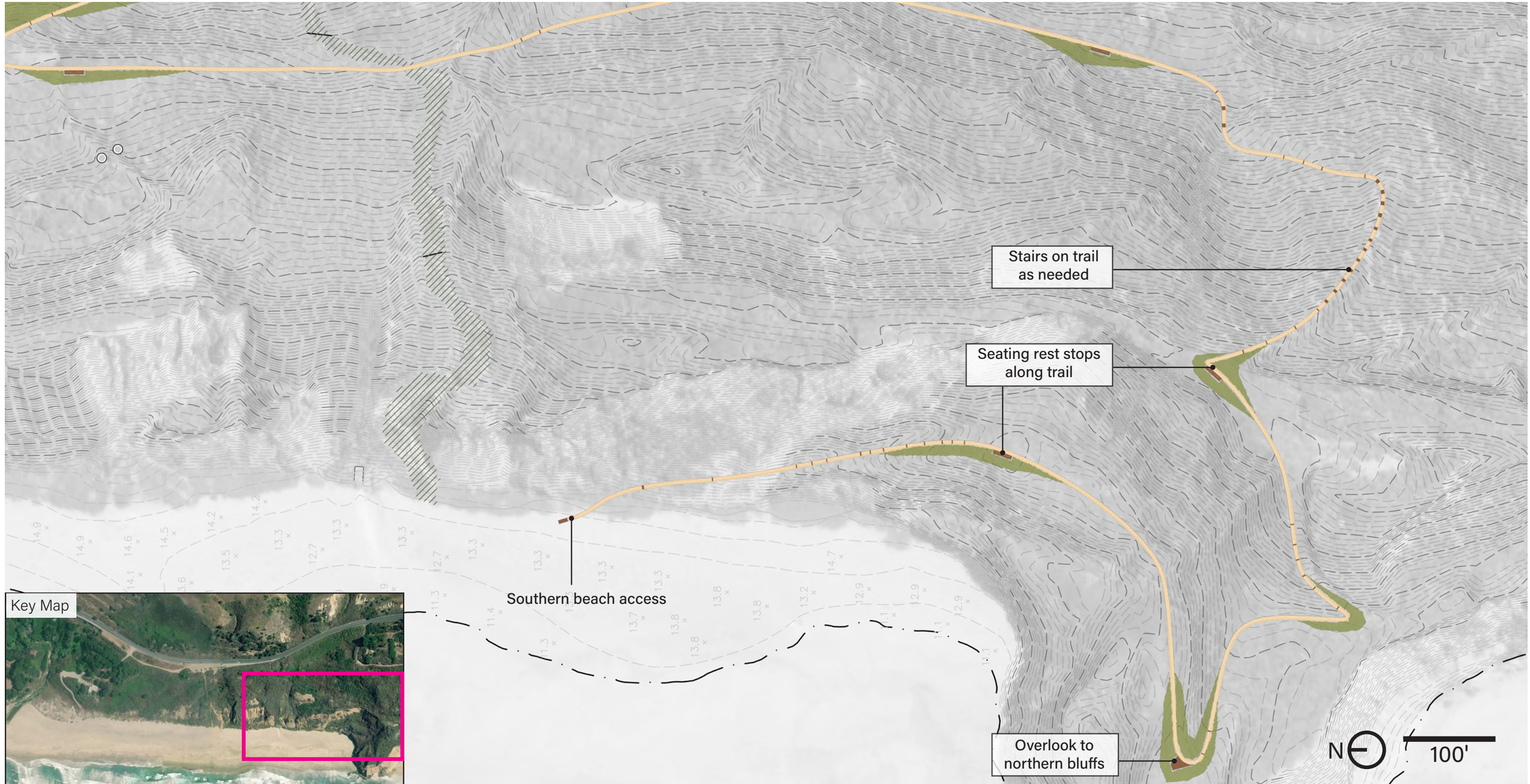


BEACH BOARDWALK AND HABITAT PROTECTION





TRAIL SEATING AND OVERLOOK





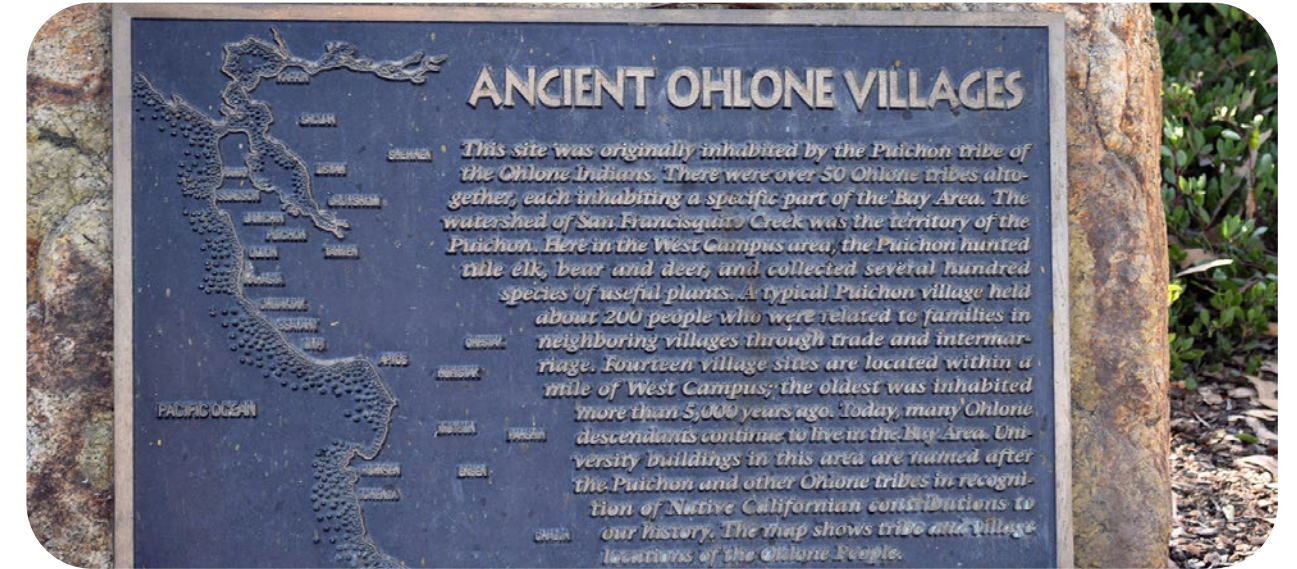
PROGRAMMING OPPORTUNITIES

Beyond physical built design elements, the Tunitas Creek Beach Improvement Project presents many programming opportunities relating to education, outreach, environmental protection, and experiences:



Community Science and Stewardship Programs

While waste receptacles and basic maintenance services will be provided, the project team understands the need for continued volunteer community stewardship programs.



Indigenous Cultural Programming

The project team is engaging with indigenous community members to create a land acknowledgement feature and explore opportunities for educational and cultural events.



Outdoor Education and Field Trips

With a ranger station on site, the project team is exploring the potential for ranger- or educator-led field trips and site tours.



Wildlife Viewing

With improved habitat protection and safe viewing experiences, Tunitas Creek Beach provides an opportunity for bird-watching groups and other wildlife viewing trips, as well as volunteer wildlife monitoring and supervised habitat restoration activities.



CONCLUSION



Thank you for viewing! Please feel free to email us at ParksandRecreation@smcgov.org if you have any additional questions or comments about the Tunitas Creek Beach Improvement Project.

Next steps for the Tunitas Creek Beach Improvement Project:

- January 2021 - Parks Commission Meeting
- February 2021 - Board of Supervisors Meeting
- Spring and Summer 2021 - Environmental Review
- Fall and Winter 2021 - Outreach and Final Design
- Summer 2022 - Construction
- Fall 2022 - Park Opens

