

March 15, 2018

COUNTY OF SAN MATEO
RECONSTRUCTION OF SEVENTH AVENUE FROM MIDDLEFIELD ROAD
TO EDISON WAY IN THE NORTH FAIR OAKS AREA
COUNTY ROAD NUMBER 561-A

TOTAL PROJECT APPROXIMATELY 0.39 MILE IN LENGTH
WITH APPURTENANT WORK THERETO
IN SAN MATEO COUNTY

COUNTY PROJECT NO. RW703
PROJECT FILE NO. E4957000

ADDENDUM NO. 2

TO ALL PLAN HOLDERS:

The following **Addendum No. 2** to the above referenced project Plans and Specifications dated February 9, 2018, shall be included in the project plans and specifications.

1. The following pages shall be replaced in the Project Specifications:

Replace pages 3 and 4 of the Notice to Contractors, pages 84, 97 and 98 of the Special Provisions and pages 3 and 4 of the Proposal with pages 3 (REV) and 4 (REV) of the Notice to Contractors, pages 84 (REV) 97 (REV) and 98 (REV) of the Special Provisions and pages 3 (REV) and 4 (REV) of the Proposal, respectively.

2. The following pages shall be replaced in the Project Plans:

Replace Plan sheets 1, 3, 4, 5, 6, 7, 10 and 14 of the Plans with sheets 1 (REV), 3 (REV), 4 (REV), 5 (REV), 6 (REV), 7 (REV), 10 (REV) and 14 (REV) of the Project Plan sheets, respectively.

Please sign and return the attached "Receipt of Addendum No. 2" form. The "Receipt of Addendum No. 2" form MUST be received in this office no later than 4:00 PM Monday, March 19, 2018 or the bid will **NOT** be considered. The Receipt of Addendum can be faxed to Gil Tourel's attention at (650)361-8220 or email at gtourel@smcgov.org.



To All Plan Holders

Reconstruction of Seventh Avenue from Middlefield Road To Edison Way

Addendum No. 2

March 15, 2018

Page 2

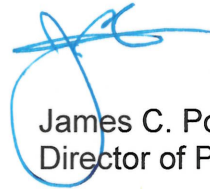
If you have any questions or require additional information, please contact John Schabowski, Wency Ng, or Gil Tourel of our office at (650) 363-4100. They can also be reached by e-mail at:

jschabowski@smcgov.org

wng@smcgov.org

gtourel@smcgov.org

Very truly yours,



James C. Porter
Director of Public Works

JCP:AMS:GT:WN:JS

F:\Users\design\C3D\E4957000\Docs\Design\Addendum\Addendum 2\E4957 Addendum 2.docx

Encl.- "Receipt of Addendum No. 2" Form

Pages 3 (REV) and 4 (REV) of the Notice to Contractors

Pages 84 (REV) 97 (REV) and 98 (REV) of the Special Provisions

Pages 3 (REV) and 4 (REV) of the Proposal

Plans Sheets 1 (REV), 3 (REV), 4 (REV), 5 (REV), 6 (REV), 7 (REV), 10 (REV) and 14 (REV)

cc: Ann M. Stillman, Deputy Director, Engineering and Resource Protection
Gil Tourel, Principal Civil Engineer, Engineering and Construction
Wency Ng, Senior Civil Engineer, Project Development and Design
John Schabowski, Assistant Engineer, Project Development and Design

March 15, 2018

COUNTY OF SAN MATEO

**RECONSTRUCTION OF SEVENTH AVENUE FROM MIDDLEFIELD ROAD
TO EDISON WAY IN THE NORTH FAIR OAKS AREA
COUNTY ROAD NUMBER 561-A**

**TOTAL PROJECT APPROXIMATELY 0.39 MILE IN LENGTH
WITH APPURTENANT WORK THERETO
IN SAN MATEO COUNTY**

**COUNTY PROJECT NO. RW703
PROJECT FILE NO. E4957000**

RECEIPT OF ADDENDUM NO. 2

I, _____, an authorized representative for _____, have received **Addendum No. 2** for the Reconstruction of Seventh Avenue from Middlefield Road to Edison Way in the North Fair Oaks Area from an authorized representative of the County of San Mateo, to be included in the Plans and Specifications for the above referenced project.

This form must be signed and received in the offices of the County of San Mateo, Department of Public Works **no later than 4:00 PM, Monday, March 19, 2018.**

“Contractor”

(Print)

(Signature)

(Date)

ENGINEER'S ESTIMATE**RECONSTRUCTION OF SEVENTH AVENUE FROM MIDDLEFIELD ROAD
TO EDISON WAY IN THE NORTH FAIR OAKS AREA
COUNTY ROAD NUMBER 561-A****TOTAL PROJECT APPROXIMATELY 0.39 MILE IN LENGTH
WITH APPURTENANT WORK THERETO
IN SAN MATEO COUNTY**

Item No.	Section No.	Estimated Quantity	Unit of Measure	Item Description
1	10	1	LS	Construction Waste Management
2	11	1	LS	Mobilization
3	11-1	1	LS	Water Pollution Control
4	12	1	LS	Maintaining Traffic
5	15-1	6	EA	Adjust Sanitary Sewer Manholes to Grade
6	15-2	1	EA	Reconstruct Sanitary Sewer Manholes to Grade
7	15-3	100	LF	Sanitary Sewer Lateral Replacement
8	15-5	19	EA	Remove and Reset Mailboxes
9	15-6	4	EA	Remove and Reinstall Wooden Neighborhood Street Gate or Fence
10	15-7	15	EA	Potholing
11	15-10	20	LF	Remove and Dispose Existing Abandoned Asbestos Water Pipe
12	15-11	9	EA	Adjust Water Valve Box to Grade (Cal Water)
13	15-12	<u>64</u>	EA	Adjust Gas Valve to Grade (PG&E)
14	16	1	LS	Clearing and Grubbing

Engineer's Estimate - Continued on Next Page

ENGINEER'S ESTIMATE**RECONSTRUCTION OF SEVENTH AVENUE FROM MIDDLEFIELD ROAD
TO EDISON WAY IN THE NORTH FAIR OAKS AREA
COUNTY ROAD NUMBER 561-A****TOTAL PROJECT APPROXIMATELY 0.39 MILE IN LENGTH
WITH APPURTENANT WORK THERETO
IN SAN MATEO COUNTY**

Item No.	Section No.	Estimated Quantity	Unit of Measure	Item Description
15	16-1	3	EA	Remove Tree
16	17	1	LS	Develop and Apply Water
17	19-1	2,300	CY	Roadway Excavation
18	19-2	250	SY	Miscellaneous Driveway Earthwork
19	22	1	LS	Finishing Roadway
20	26	420	CY	Aggregate Base (Class 2)
21	27(S)	5,200	SY	Cement Treatment
22	27-1	30	TON	Sand Cover
23	39-1	1,275	TON	Asphalt Concrete (Type B, 1/2" Maximum Medium Grading)
24	39-2	1,120 330	SY	Place Asphalt Concrete (Miscellaneous Areas)
25	39-3	1,650	SY	Deep Lift Asphalt Concrete (Type B, 3/4" Maximum Medium Grading) (0.50' Deep)
26	51-2	235	CY	Class 3 Concrete
27	56-1	8	EA	Remove and Reset Existing Roadside Signs
28	56-2	24	EA	Install Object Markers
29	64	100	LF	Three-inch (3") schedule 40 PVC Drain Pipe

Engineer's Estimate - Continued on Next Page

SECTION 26.
AGGREGATE BASE (CLASS 2)

Aggregate base shall be Class 2 and shall conform to the provisions in Section 26, “Aggregate Bases,” of the Standard Specifications and these Special Provisions.

Aggregate base shall be placed where shown on the Plans, as specified in these Special Provisions, and as directed by the Engineer.

Aggregate base shall be produced from commercial quality aggregate consisting of broken stone, crushed gravel, natural, clean, rough-surfaced gravel and sand, or a combination thereof.

~~Aggregate base shall consist of reclaimed aggregate material up to 50% of the total volume whenever possible, as allowed in t~~The first paragraph of Section 26-1.02A, "Class 2 Aggregate Base," ~~which states is amended to state:~~

“... Aggregate may include material processed from reclaimed asphalt concrete, portland cement concrete, lean concrete base, cement treated base or a combination of any of these materials. ~~The amount of reclaimed material shall not exceed 50 percent of the total volume of the aggregate used.~~”

The grading of the material shall conform to the three-quarter inch (3/4”) maximum specified in Section 26-1.02A, “Class 2 Aggregate Base,” of the Standard Specifications.

Spreading and compacting shall be performed by methods that will produce a uniform base, firmly and properly compacted to not less than ninety-five percent (95%) relative compaction, and free from pockets of course or fine material. All compacted materials may be tested by the County. The Contractor’s attention is directed to Section 6-2, “Materials Testing,” of these Special Provisions. Acceptance testing shall be performed using California Test Method (CT) 338 or ASTM D6938, as directed by the Engineer.

The Contractor shall notify the County a minimum of one (1) working day prior to when compacted materials are ready to be tested. The County pays for Contractor’s call for first test only. Should the first test fail, or the Engineer’s designee to perform the first test arrive and the Contractor not be ready for the test, then all subsequent tests will

as included in the Contract price paid per ton of asphalt concrete, and no additional compensation will be allowed therefore.

The Contractor's attention is directed to Paragraph 12 of Section 39-6.01, "General Requirements," of the Standard Specifications for spreading and compacting asphalt concrete:

"Longitudinal joints in the top layer shall correspond with the edges of proposed traffic lanes. Longitudinal joints in all layers shall be offset not less than 0.50 foot alternately each side of the edges of traffic lanes."

Any asphalt concrete placed outside the lines and dimensions shown on the Plans, and that is not authorized by the Engineer in writing, shall not be paid for. Such quantity of asphalt concrete will be determined by the Engineer using any method he/she deems best suited to obtain an accurate quantity, and such quantity will be deducted from the total paid the Contractor, and no additional compensation will be allowed therefore. The unit weight of asphalt concrete for purposes of deduction shall be the average tested weight of the asphalt concrete used on this Project, or, absent any testing, 155 pounds per cubic foot.

The Contract unit price paid per ton for this item, "Asphalt Concrete (Type B, 1/2" Maximum, Medium grading)," shall include full compensation for furnishing all labor, materials, tools, equipment and incidentals, and for doing all work involved in furnishing and placing asphalt concrete, as shown on the Plans, as specified in these Special Provisions, and as directed by the Engineer, and no additional compensation will be allowed therefore.

39-2. Place Asphalt Concrete (Miscellaneous Areas)

Place Asphalt Concrete (Miscellaneous Areas) shall conform to the provisions of Sections 39-7, "Miscellaneous," of the Standard Specifications, these Special Provisions, the Plans, and the directions of the Engineer.

Paragraph 1 of Section 39-7.01, "Miscellaneous areas," is amended to read:

"The surfacing of miscellaneous areas to be paid for at the Contract price per square yard for Place Asphalt Concrete (Miscellaneous Areas), in addition to the price paid for the materials involved, shall be limited to driveway ~~and roadway conforms, and~~ designated shoulder areas, ~~pedestrian walkways, gutters, gutter flares, areas outside the traveled way~~ which are shown on the plans as ~~miscellaneous areas~~ "Miscellaneous Asphalt Concrete" area, and other areas designated by the Engineer."

Asphalt concrete used for miscellaneous asphalt concrete areas shall be Type B (1/2" maximum, medium grading) and shall conform to the provisions of Section 39, "Asphalt Concrete (Type B)," of these Special Provisions.

Aggregate base required for miscellaneous asphalt concrete areas shall conform to the provisions of Section 26, "Aggregate Bases," of these Special Provisions.

Asphaltic Emulsion (Tack Coat) required for miscellaneous asphalt concrete areas shall conform to the provisions of Section 94, "Asphaltic Emulsion (Prime Coat, Curing Seal and Tack Coat)," of these Special Provisions.

The Contractor is advised that it will be his responsibility to assure that existing drainage patterns are maintained at all locations, as indicated on the Plans, unless otherwise directed by the Engineer.

Any miscellaneous asphalt concrete placed beyond the limits, as shown on Plans or as directed by the Engineer, and resulting from the Contractor's operations, shall be at the Contractor's expense, and no additional compensation will be allowed therefore.

The Contractor's attention is directed to the fact that payment for all roadway excavation, ~~driveway conforms, deep lift excavation~~ and furnishing asphalt concrete (Type B) and aggregate base for miscellaneous asphalt concrete areas (driveway and shoulder conforms), shall be paid for separately in accordance with the provisions of Section 19, "Earthwork," Section 26, "Aggregate Base (Class 2)," and Section 39, "Asphalt Concrete (Type B)," of these Special Provisions.

The Contractor's attention is directed to the fact that full compensation for furnishing and placing asphaltic emulsion (tack coat), complete in-place, shall be considered as included in the Contract price paid per square yard for this item, "Place Asphalt Concrete (Miscellaneous Areas)". Reference is made to Section 94, "Asphaltic Emulsion (Prime Coat, Curing Seal and Tack Coat)".

The Contract price paid per square yard for this item, "Place Asphalt Concrete (Miscellaneous Areas)," shall include full compensation for preparing areas to receive asphalt concrete and for furnishing all labor, materials (except for asphalt concrete (Type B) and aggregate base), tools, equipment and incidentals, and for doing all work involved in placing asphalt concrete in miscellaneous asphalt concrete areas, including, but not limited to, all backfill, and sub-grade preparation, hauling, placing, spreading, and compacting of asphalt concrete in miscellaneous asphalt concrete areas, as shown on the Plans, as specified in the Standard Specifications and these Special Provisions, and as directed by the Engineer, and no additional compensation will be allowed therefore.

PROPOSAL TO THE COUNTY OF SAN MATEO

**RECONSTRUCTION OF SEVENTH AVENUE FROM MIDDLEFIELD ROAD
TO EDISON WAY IN THE NORTH FAIR OAKS AREA
COUNTY ROAD NUMBER 561-A**

**TOTAL PROJECT APPROXIMATELY 0.39 MILE IN LENGTH
WITH APPURTENANT WORK THERETO
IN SAN MATEO COUNTY**

Item No.	Section No.	Estimated Quantity	Unit of Measure	Item Description	Item Price (In Figures)	Total (In Figures)
1	10	1	LS	Construction Waste Management	\$	\$
2	11	1	LS	Mobilization	\$	\$
3	11-1	1	LS	Water Pollution Control	\$	\$
4	12	1	LS	Maintaining Traffic	\$	\$
5	15-1	6	EA	Adjust Sanitary Sewer Manholes to Grade	\$	\$
6	15-2	1	EA	Reconstruct Sanitary Sewer Manholes to Grade	\$	\$
7	15-3	100	LF	Sanitary Sewer Lateral Replacement	\$	\$
8	15-5	19	EA	Remove and Reset Mailboxes	\$	\$
9	15-6	4	EA	Remove and Reinstall Wooden Neighborhood Street Gate or Fence	\$	\$
10	15-7	15	EA	Potholing	\$	\$
11	15-10	20	LF	Remove and Dispose Existing Abandoned Asbestos Water Pipe	\$	\$
12	15-11	9	EA	Adjust Water Valve Box to Grade (Cal Water)	\$	\$
13	15-12	<u>64</u>	EA	Adjust Gas Valve to Grade (PG&E)	\$	\$
14	16	1	LS	Clearing and Grubbing	\$	\$

Proposal - Continued on Next Page

PROPOSAL TO THE COUNTY OF SAN MATEO

**RECONSTRUCTION OF SEVENTH AVENUE FROM MIDDLEFIELD ROAD
TO EDISON WAY IN THE NORTH FAIR OAKS AREA
COUNTY ROAD NUMBER 561-A**

**TOTAL PROJECT APPROXIMATELY 0.39 MILE IN LENGTH
WITH APPURTENANT WORK THERETO
IN SAN MATEO COUNTY**

Item No.	Section No.	Estimated Quantity	Unit of Measure	Item Description	Item Price (In Figures)	Total (In Figures)
15	16-1	3	EA	Remove Tree	\$	\$
16	17	1	LS	Develop and Apply Water	\$	\$
17	19-1	2,300	CY	Roadway Excavation	\$	\$
18	19-2	250	SY	Miscellaneous Driveway Earthwork	\$	\$
19	22	1	LS	Finishing Roadway	\$	\$
20	26	420	CY	Aggregate Base (Class 2)	\$	\$
21	27(S)	5,200	SY	Cement Treatment	\$	\$
22	27-1	30	TON	Sand Cover	\$	\$
23	39-1	1,275	TON	Asphalt Concrete (Type B, 1/2" Maximum Medium Grading)	\$	\$
24	39-2	1,120 <u>330</u>	SY	Place Asphalt Concrete (Miscellaneous Areas)	\$	\$
25	39-3	1,650	SY	Deep Lift Asphalt Concrete (Type B, 3/4" Maximum Medium Grading) (0.50' Deep)	\$	\$
26	51-2	235	CY	Class 3 Concrete	\$	\$
27	56-1	8	EA	Remove and Reset Existing Roadside Signs	\$	\$
28	56-2	24	EA	Install Object Markers		
29	64	100	LF	Three-inch (3") schedule 40 PVC Drain Pipe	\$	\$

Proposal - Continued on Next Page

SAN MATEO COUNTY CALIFORNIA

RECONSTRUCTION OF SEVENTH (7TH) AVENUE

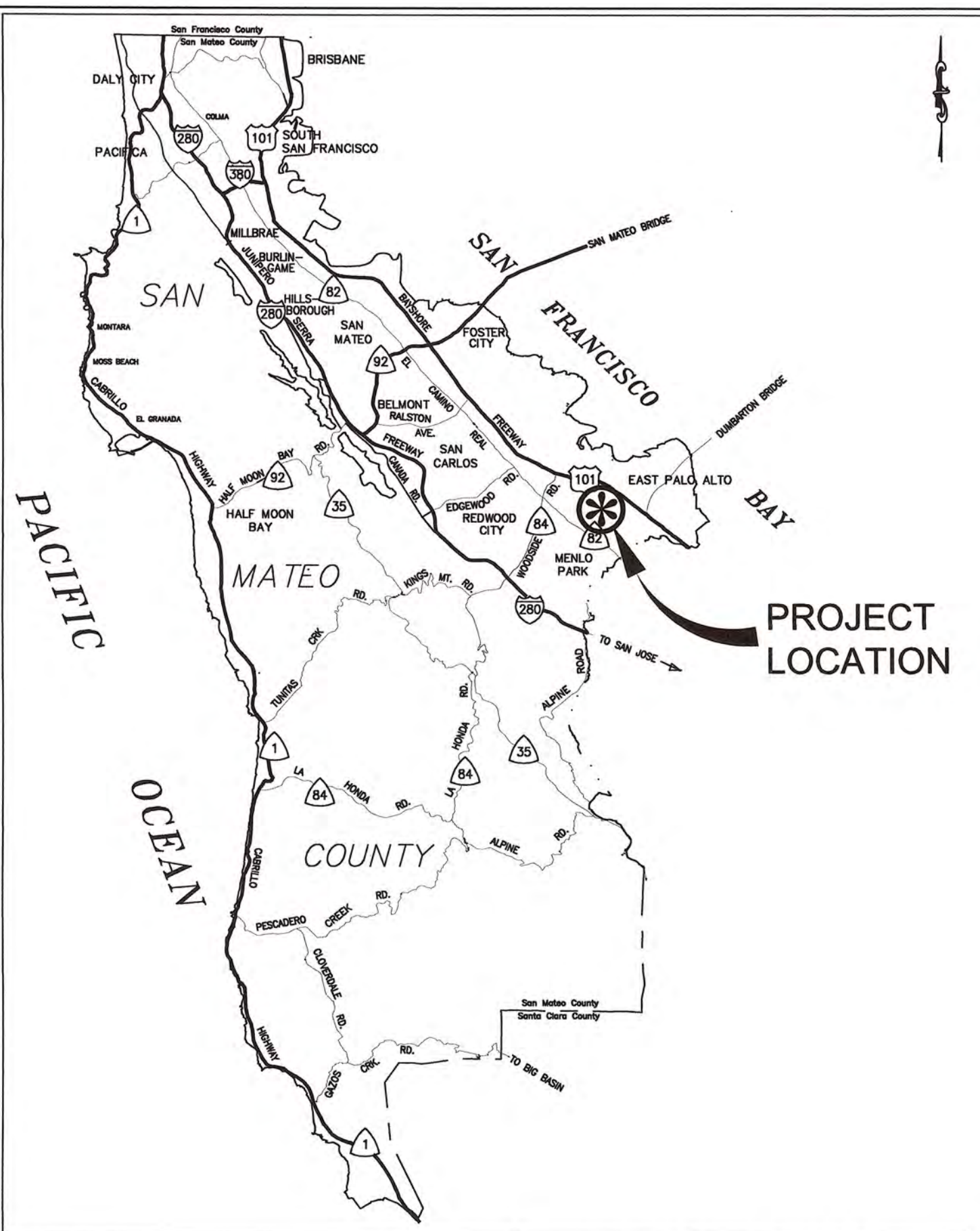
FROM MIDDLEFIELD ROAD TO EDISON WAY IN THE NORTH FAIR OAKS AREA
COUNTY ROAD NUMBER 561-A

TOTAL PROJECT LENGTH, APPROXIMATELY 0.39 MILES

TO BE SUPPLEMENTED BY STATE OF CALIFORNIA DEPARTMENT OF TRANSPORTATION STANDARD PLANS DATED MAY 2006 AND ADOPTED BY SAN MATEO COUNTY, NOVEMBER 14, 2006, BY RESOLUTION NO. 68389

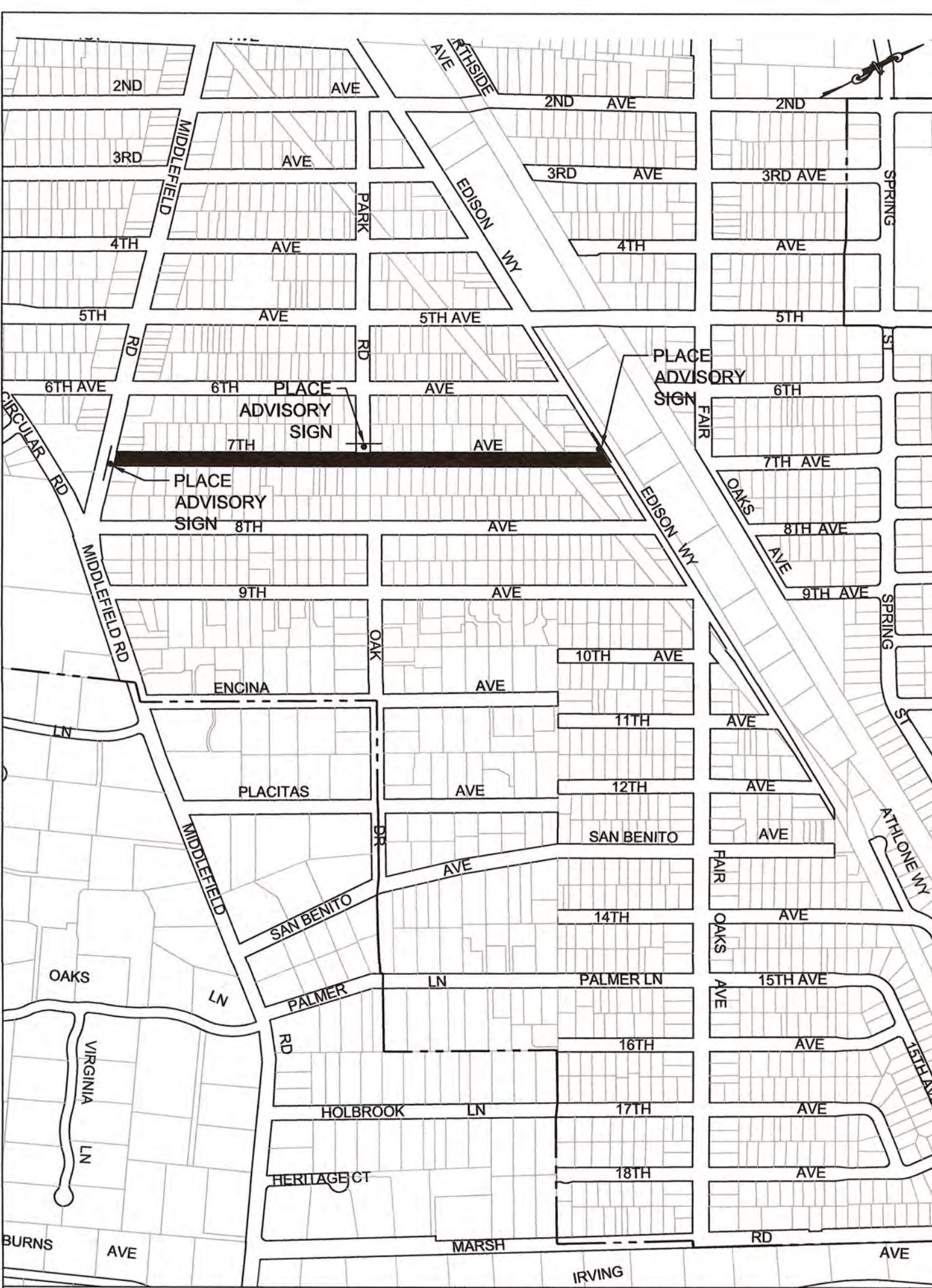


APPROVED: _____
DATE: FEBRUARY 9, 2018
JAMES C. PORTER, DIRECTOR OF PUBLIC WORKS
R. C. E. # 48056 / EXPIRES 12-31-2019
ADDENDUM NO. 2
DATE: MARCH 15, 2018
JAMES C. PORTER, DIRECTOR OF PUBLIC WORKS
R. C. E. # 48056 / EXPIRES 12-31-2019



VICINITY MAP
NO SCALE

PROJECT LOCATION
SEVENTH (7TH) AVENUE, COUNTY ROAD NO 561-A, MENLO PARK, NORTH FAIR OAKS AREA



LOCATION MAP
NO SCALE

PROJECT LOCATION
SEVENTH (7TH) AVENUE, COUNTY ROAD NO 561-A, MENLO PARK, NORTH FAIR OAKS AREA

ABBREVIATIONS:

AB (CL.2)	AGGREGATE BASE (CLASS 2)
Abn	ABANDON
AC	ASPHALT CONCRETE
AC (TYPE B)	ASPHALT CONCRETE (TYPE B)
ACP	ASBESTOS CONCRETE PIPE
AGG	AGGREGATE
AV	AVENUE
BC	BACK OF CURB
BLB BOX	BUBBLE-UP BOX
BW	BACK OF WALK
CATV	CABLE TV
CONC	CONCRETE
C & G	CURB AND GUTTER
CL	CENTERLINE
CTN	CEMENT TREATED NATIVE
D	AVERAGE WIDTH OF DRIVEWAY RAMP
DI	DRAINAGE INLET, DROP INLET
DIP	DUCTILE IRON PIPE
D/W	DRIVEWAY
ELE	ELEVATION
ETW	EDGE OF TRAVEL WAY
EP	EDGE OF PAVEMENT
EX, EXIST	EXISTING
FD	FOUND
FG	FINISHED GROUND
FH	FIRE HYDRANT
FL	FLOW LINE
G	GAS LINE
GB	GRADE BREAK
GV	GAS VALVE
ID	INSIDE DIAMETER
INV	INVERT
JP	JOINT UTILITY POLE
LG, LIP	LIP OF GUTTER
LT, L	LEFT
LH	SANITARY SEWER LAMPHOLE
MAX	MAXIMUM
MB	MAILBOX
MB (#)	MAILBOXES (QUANTITY)
MIN	MINIMUM
MPH	MILES PER HOUR
N/S	NAIL & SHINER
O.G.	ORIGINAL GROUND, ON GRADE
PBMH	SBC/PAC BELL MANHOLE
PCC	PORTLAND CONCRETE CEMENT
PK	PARKER-KALON NAIL
PNT	PNT
PR	PROPOSED
PVC	POLYVINYL CHLORIDE PIPE
PVI	POINT OF VERTICAL INFLECTION
RCP	REINFORCED CONCRETE PIPE
RT, R	RIGHT
R/W, ROW	RIGHT OF WAY
S	SLOPE
SD	STORM DRAIN
SDMH	STORM DRAIN MANHOLE
SHT	SHEET
SS	SANITARY SEWER
SSCO	SANITARY SEWER CLEANOUT
SSFI	SANITARY SEWER FLUSHING INLET
SSMH	SANITARY SEWER MANHOLE
ST	STREET
STA	STATION
T	TELEPHONE
TB	TOP OF BANK
TC	TOP OF CURB
TD	TOP OF DIKE
TG	TOP OF GRATE
TS	TOP OF SIDEWALK
TYP	TYPICAL
UD	UNDER DRAIN
UND	UNDERGROUND
UNK	UNKNOWN
VCP	VITRIFIED CLAY PIPE
VG	VALLEY GUTTER
WM	WATER METER
WM (#)	WATER METERS (QUANTITY)
WV	WATER VALVE
WV (#)	WATER VALVES (QUANTITY)
WW	WALKWAY
Ø	DIAMETER

LEGEND:

	STORM DRAIN LINE (EX)
	STORM DRAIN LINE (EX) PROFILE
	SANITARY SEWER LINE "ACTIVE"
	SANITARY SEWER LINE "ACTIVE" PROFILE
	WATER LINE "ACTIVE"
	WATER LINE "ACTIVE" PROFILE
	ACP WATER LINE (Abn)
	ACP WATER LINE (Abn) PROFILE
	GAS LINE (Abn)
	GAS LINE (Abn) PROFILE
	GAS LINE "ACTIVE"
	GAS LINE "ACTIVE" PROFILE
	JOINT COMMUNICATION LINE (EX)
	JOINT COMMUNICATION LINE (EX) PROFILE
	RIGHT OF WAY

	NATIVE BACKFILL
	CLASS 2 AGGREGATE BASE - AB (CL. 2) (GRAVEL)
	CLASS 3 CONCRETE
	MISCELLANEOUS ASPHALT CONCRETE
	DEEP LIFT AREAS (0.50' DEEP ASPHALT CONCRETE)
	ROCK SWALE AND FRENCH DRAIN

UPDATES:
1) HATCH PATTERNS DARKNESS ADJUSTED TO MATCH THE PLAN AND LEGEND
2) "ASPHALT CONCRETE" LABEL CHANGED TO "MISCELLANEOUS ASPHALT CONCRETE" LABEL

	(xxx.xx) = EXISTING ELEVATION
	xxx.xx = PROPOSED ELEVATION
	+0.00 = STATION (00.00) 00.00 = (EXIST ELE) PR ELE AT LIP OF GUTTER
	WATER METER
	WATER VALVE
	GAS VALVE
	JOINT UTILITY POLE
	TELEPHONE POLE
	GUY WIRE ANCHOR
	SANITARY SEWER MANHOLE
	SANITARY SEWER CLEANOUT
	SANITARY SEWER FLUSHING INLET
	STORM DRAIN MANHOLE
	UNDERDRAIN
	BUBBLE-UP BOX
	UNKNOWN MANHOLE

LEGEND:

	FIRE HYDRANT
	FIRE HYDRANT MARKERS
	MAILBOX
	SIGN
	MONUMENT
	DETAIL NUMBER AND SHEET BENCHMARK
	DRIVEWAY NUMBER
	HOUSE NUMBER ADDRESS
	EXISTING TREE
	FENCE / WALL
	CLASS 1 FLEXIBLE OBJECT MARKER
	NAIL AND WASHER

NOTES:

- CONTRACTOR SHALL CONFINE HIS OPERATIONS AND ACTIVITIES WITHIN THE PROJECT LIMITS, CONSISTING OF ROAD RIGHT-OF-WAY, RIGHTS OF ENTRY AND/OR PROJECT CONFORMS, AS SHOWN ON THE PLANS AND AS DIRECTED BY THE ENGINEER.
- CONTINUOUS DUST CONTROL SHALL BE PROVIDED AS REQUIRED BY SECTION 17 OF THE SPECIAL PROVISIONS AND AS DIRECTED BY THE ENGINEER.
- LOCATIONS AND DEPTHS OF EXISTING UTILITIES SHOWN ON THE PLANS ARE APPROXIMATE ONLY. CONTRACTOR SHALL BE RESPONSIBLE FOR CONTACTING THE UTILITIES TO DETERMINE EXACT LOCATIONS AND DEPTHS. CONTRACTOR SHALL CALL USA NORTH 811 (USA) UNDERGROUND SERVICE ALERT A MINIMUM OF FORTY-EIGHT (48) HOURS IN ADVANCE OF ANY EXCAVATION OR TRENCHING WORK. USA MAY BE CONTACTED EITHER ON-LINE AT USANORTH811.ORG OR BY PHONE BY DIALING (800) 227-2600 OR 811. WHEN CALLING, BE PREPARED TO GIVE LOCATION AND NATURE OF WORK, START DATE, COMPANY NAME, ADDRESS AND TELEPHONE NUMBER.
- PLANS MAY NOT SHOW ALL EXISTING WATER, GAS OR SANITARY SEWER LATERALS. CONTRACTOR SHALL BE RESPONSIBLE FOR VERIFICATION AND PRESERVATION OF ALL SUCH FACILITIES WHICH ARE NOT TO BE RELOCATED.
- CONTRACTOR IS ADVISED THAT EXCAVATION MAY CONFLICT WITH SANITARY SEWER LATERALS, GAS LINES, WATER LINES AND OTHER UNDERGROUND UTILITIES. ANY DAMAGE TO EXISTING FACILITIES CAUSED BY THE CONTRACTOR SHALL BE REPAIRED AT THE CONTRACTOR'S EXPENSE.
- DRIVEWAY OPENINGS AND CONFORM LOCATIONS SHOWN ARE APPROXIMATE ONLY. EXACT LOCATIONS WILL BE DETERMINED IN THE FIELD BY THE ENGINEER. SURFACED SHOULDER CONFORM LIMITS ARE AS INDICATED AT 3 FEET FROM OUTSIDE EDGE OF THE GUTTER, UNLESS DIRECTED OTHERWISE BY THE ENGINEER OR OTHERWISE NOTED ON THE PLANS.
- NO TREES, VEGETATION OR IMPROVEMENTS (INCLUDING FENCES) SHALL BE REMOVED WITHOUT THE PRIOR WRITTEN CONSENT AND APPROVAL OF THE ENGINEER. VEGETATION AND IMPROVEMENTS WHICH ARE DESIGNATED TO BE REMOVED SHALL BECOME THE PROPERTY OF THE CONTRACTOR, UNLESS OTHERWISE DIRECTED BY THE ENGINEER. REFER TO PROJECT SPECIAL PROVISIONS SECTION 16 REGARDING REQUIREMENTS FOR ADVANCE NOTIFICATION OF PROPERTY OWNERS.
- THE CONTRACTOR'S ATTENTION IS DIRECTED TO SECTION 5-1.07 OF THE STANDARD SPECIFICATIONS. THE SURVEY AND ASSOCIATED STAKING SHALL BE IN CONFORMANCE WITH SECTION 100, CONSTRUCTION STAKING AND LAYOUT OF THE SPECIAL PROVISIONS.
- WHEN DIRECTED BY THE ENGINEER, CUT AND FILL SLOPE RATIOS SHALL BE VARIED TO AVOID TREES OR OTHER EXISTING IMPROVEMENTS.
- CONTRACTOR SHALL EXERCISE CARE WHEN EXCAVATING NEAR TREES AND ROOTS OF TREES TO REMAIN. SEE SECTION 19 OF THE SPECIAL PROVISIONS.
- ANY DAMAGE, AS A RESULT OF THE CONTRACTOR'S OPERATION, TO PAVEMENT AND BASE MATERIAL THAT IS TO REMAIN SHALL BE REPAIRED, OR REMOVED AND REPLACED WITH SAME TYPE OF MATERIAL OR APPROVED EQUAL, AS DIRECTED BY THE ENGINEER AND AT THE SOLE EXPENSE OF THE CONTRACTOR. THE ENGINEER SHALL BE THE SOLE JUDGE OF THE ADEQUACY OF THE COMPLETED REMEDIAL WORK.
- CONTRACTOR'S ATTENTION IS DIRECTED TO THE CONSTRUCTION CENTERLINE ALIGNMENTS LISTED BELOW:
"7-CL" LINE - SEVENTH (7TH) AVENUE
(BETWEEN MIDDLEFIELD ROAD AND EDISON WAY)
"P-CL" LINE - PARK ROAD
(BETWEEN SEVENTH (7TH) AVENUE AND SECOND (2ND) AVENUE)
"E-CL" LINE - EDISON WAY
(BETWEEN FIRST (1ST) AVENUE AND ELEVENTH (11TH) AVENUE)
"M-CL" LINE - MIDDLEFIELD ROAD
(BETWEEN FIFTH (5TH) AVENUE AND EIGHTH (8TH) AVENUE)

APPLICABLE STANDARD PLANS:
A20A, A20B, A24D, A73A, A87, A88A, A88B, D97H, T13

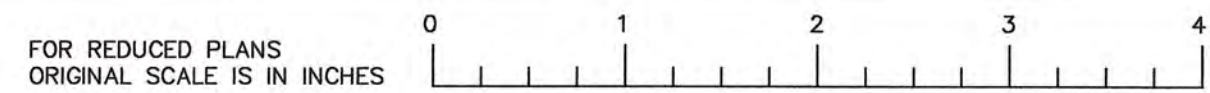
REFERENCE DWG:
MIDDLEFIELD ROAD UNDERGROUND UTILITY DISTRICT (PHASE 1) AND CORRIDOR IMPROVEMENTS (1/4511)
NORTH FAIR OAKS IMPROVEMENTS - YEAR 1 (FILE NO. 1/4663)

SHEET INDEX:

- TITLE SHEET / GENERAL NOTES
- TYPICAL SECTIONS
- PLAN AND PROFILE
- DRIVEWAY AND GUTTER DETAIL
- PLAN AND GRID DATA
- MISCELLANEOUS DETAILS
- SURVEY CONTROL PLAN



REVISION	DATE	DESIGNED BY: JS	RECONSTRUCTION OF SEVENTH (7TH) AVENUE	SCALE: NONE
1	03-15-18, ADDENDUM 2	CHECKED BY: WN	TITLE SHEET / GENERAL NOTES	DATE: 02-09-2018
		DRAWN BY: JS	JAMES C. PORTER, DIRECTOR OF PUBLIC WORKS SAN MATEO COUNTY	FILE NO.: 1/4957
			555 COUNTY CENTER, 5th FLOOR REDWOOD CITY, CALIFORNIA 94063	1 (REV) SHEET 1 OF 15



FILENAME: F:\USERS\DESIGN\C30\E4957000\DWGS\SHEETS\E4957001.DWG (E4957001)



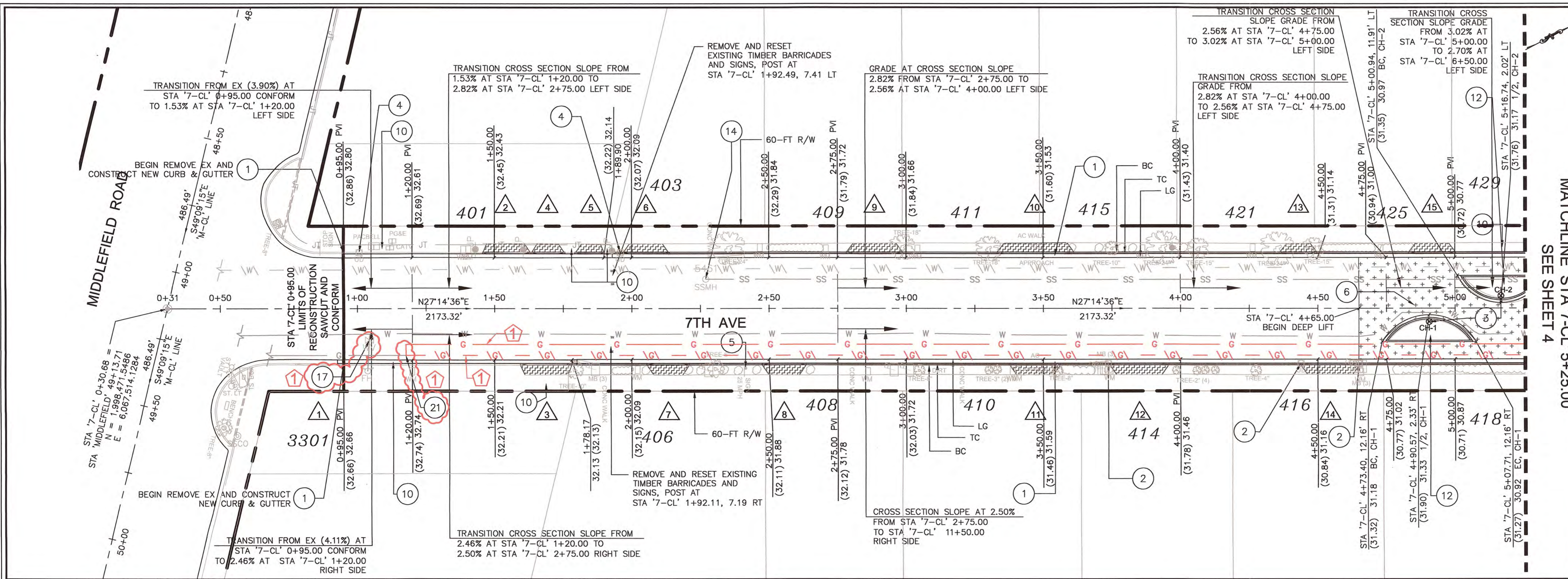
APPROVED: _____
 DATE: FEBRUARY 9, 2018
 JAMES C. PORTER, DIRECTOR OF PUBLIC WORKS
 R. C. E. # 48056 / EXPIRES 12-31-2019

ADDENDUM NO. 2
 DATE: MARCH 15, 2018
 JAMES C. PORTER, DIRECTOR OF PUBLIC WORKS
 R. C. E. # 48056 / EXPIRES 12-31-2019

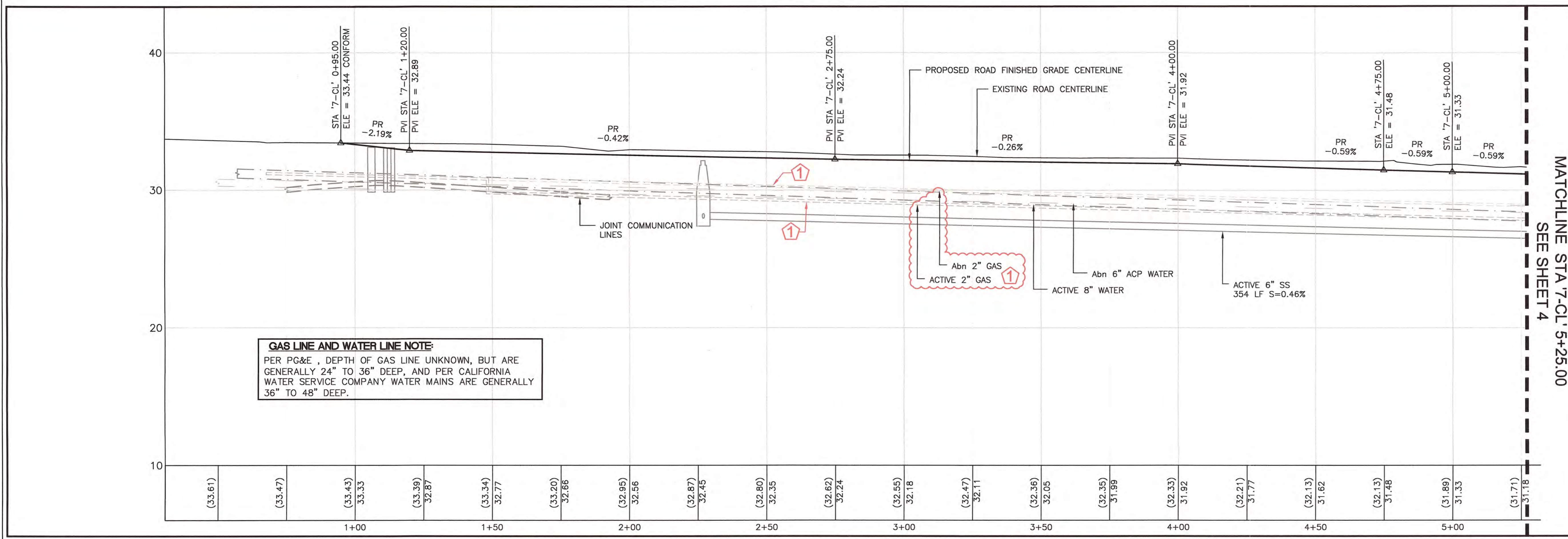
CHICANE CURVE TABLE			
CURVE	LENGTH	RADIUS	DELTA
CH-1	41.37'	19.89'	119° 08' 58"
CH-2	39.28'	17.55'	128° 16' 27"

* CURVE TABLE DATA IS BASED ON PROPOSED LIP OF GUTTER

- LEGEND:**
- 1 REMOVE AND CONSTRUCT CONCRETE CURB AND GUTTER (TYP)
 - 2 INSTALL UNDERDRAIN
 - 3 INSTALL CLASS 1 FLEX POST OBJECT MARKER
 - 4 INSTALL SIDEWALK CURB AND GUTTER UNDERDRAIN
 - 5 REMOVE AND RESET EXISTING ROADSIDE SIGNS
 - 6 CONSTRUCT AC 0.50" DEEP LIFT (TYPE "B" 3/4" MAXIMUM MEDIUM GRADING); PARK ROAD GRID DATA, SEE SHEET 10
 - 7 CONSTRUCT CONCRETE 4' WIDE VALLEY GUTTER AT STREET INTERSECTION
 - 8 INSTALL TEMPORARY MAILBOX
 - 9 INSTALL CURB AND VALLEY GUTTER TRANSITION
 - 10 REMOVE EX AND CONSTRUCT NEW CONCRETE CURB AND GUTTER AT EXISTING SIDEWALK
 - 11 REMOVE EX AND CONSTRUCT NEW CONCRETE ROUNDABOUTS
 - 12 REMOVE EX AND CONSTRUCT NEW CONCRETE CHICANES AND CURB AND GUTTER
 - 13 REMOVE EX AND CONSTRUCT NEW CONCRETE CHICANES WITH ROCK SWALE AND FRENCH DRAIN; REMOVE TREES AT CHICANES NEAR 512, 524 AND 537 7TH AVENUE
 - 14 ADJUST SANITARY SEWER MANHOLE TO GRADE
 - 15 TRANSITION FROM VALLEY GUTTER TO CURB AND GUTTER
 - 16 INSTALL ACCESS RAMP
 - 17 ADJUST CALIFORNIA WATER COMPANY VALVE CASING, COVER, AND FRAME (BY OTHERS)
 - 18 INTERSECTION OF 7TH AVENUE AND EDISON WAY PLAN AND GRID DATA; SEE SHEET 10
 - 19 REMOVE AND DISPOSE EXISTING DRIVEWAY UNDERDRAIN PIPE
 - 20 ADJUST PACIFIC GAS AND ELECTRIC COMPANY VALVE CASING, COVER AND FRAME (AS DIRECTED BY THE ENGINEER)
 - 21 EXISTING GAS LINE FROM STA '7-CL' 1+174.66 TO STA '7-CL' 12+30.11 IS ANTICIPATED TO BE ABANDONED AND RELOCATED AS SHOWN; CONTRACTOR TO VERIFY
- NOTE: REMOVE AND REGRADE ALL EXISTING WALKWAY FROM TOP OF CURB TO EXISTING FACE OF WALK OR AS DIRECTED BY THE ENGINEER AND REPLACE IN KIND. SEE _____



PLAN SCALE 1IN = 20FT



GAS LINE AND WATER LINE NOTE:
 PER PG&E, DEPTH OF GAS LINE UNKNOWN, BUT ARE GENERALLY 24" TO 36" DEEP, AND PER CALIFORNIA WATER SERVICE COMPANY WATER MAINS ARE GENERALLY 36" TO 48" DEEP.

LEGEND:

- SD STORM DRAIN LINE (EX)
- SD STORM DRAIN LINE (EX) PROFILE
- SS SANITARY SEWER LINE "ACTIVE"
- SS SANITARY SEWER LINE "ACTIVE" PROFILE
- WATER LINE "ACTIVE"
- WATER LINE "ACTIVE" PROFILE
- ACP WATER LINE (Abn)
- ACP WATER LINE (Abn) PROFILE
- GAS LINE "ACTIVE" PROFILE
- JOINT COMMUNICATION LINE (EX)
- JOINT COMMUNICATION LINE (EX) PROFILE
- RIGHT OF WAY
- MISCELLANEOUS ASPHALT CONCRETE
- DEEP LIFT AREAS (0.50" DEEP ASPHALT CONCRETE)
- ROCK SWALE AND FRENCH DRAIN
- NATIVE BACKFILL
- CLASS 2 AGGREGATE BASE - AB (CL. 2) (GRAVEL)
- CLASS 3 CONCRETE

CENTERLINE PROFILE SCALE
 1IN = 20FT HORIZONTAL
 1IN = 4FT VERTICAL

UPDATES:
 1.) HATCH PATTERNS DARKNESS ADJUSTED TO MATCH THE PLAN AND LEGEND
 2.) "ASPHALT CONCRETE" LABEL CHANGED TO "MISCELLANEOUS ASPHALT CONCRETE" LABEL

REVISION

REVISION	DATE	DESIGNED BY:	CHECKED BY:	DRAWN BY:
1	03-15-18, ADDENDUM 2	JS	WN	JN

JAMES C. PORTER, DIRECTOR OF PUBLIC WORKS
 SAN MATEO COUNTY

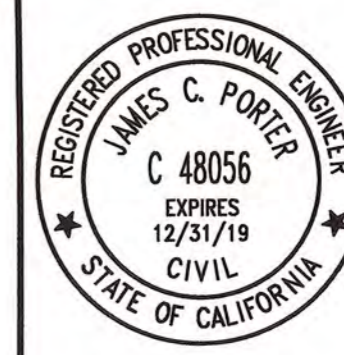
555 COUNTY CENTER, 5th FLOOR
 REDWOOD CITY, CALIFORNIA 94063

RECONSTRUCTION OF SEVENTH (7TH) AVENUE
PLAN AND PROFILE
 SCALE: 1-IN = 20-FT
 DATE: 02-09-2018
 FILE NO.: 1/4957

FOR REDUCED PLANS ORIGINAL SCALE IS IN INCHES

3 (REV)
 SHEET 3 OF 15

FILENAME: F:\USERS\DESIGN\G3D\6957000\DWGS\SHEETS\E4957003-7.DWG (E4957003)



APPROVED: _____
 DATE: FEBRUARY 9, 2018
 JAMES C. PORTER, DIRECTOR OF PUBLIC WORKS
 R. C. E. # 48056 / EXPIRES 12-31-2019

ADDENDUM NO. 2
 DATE: MARCH 15, 2018
 JAMES C. PORTER, DIRECTOR OF PUBLIC WORKS
 R. C. E. # 48056 / EXPIRES 12-31-2019

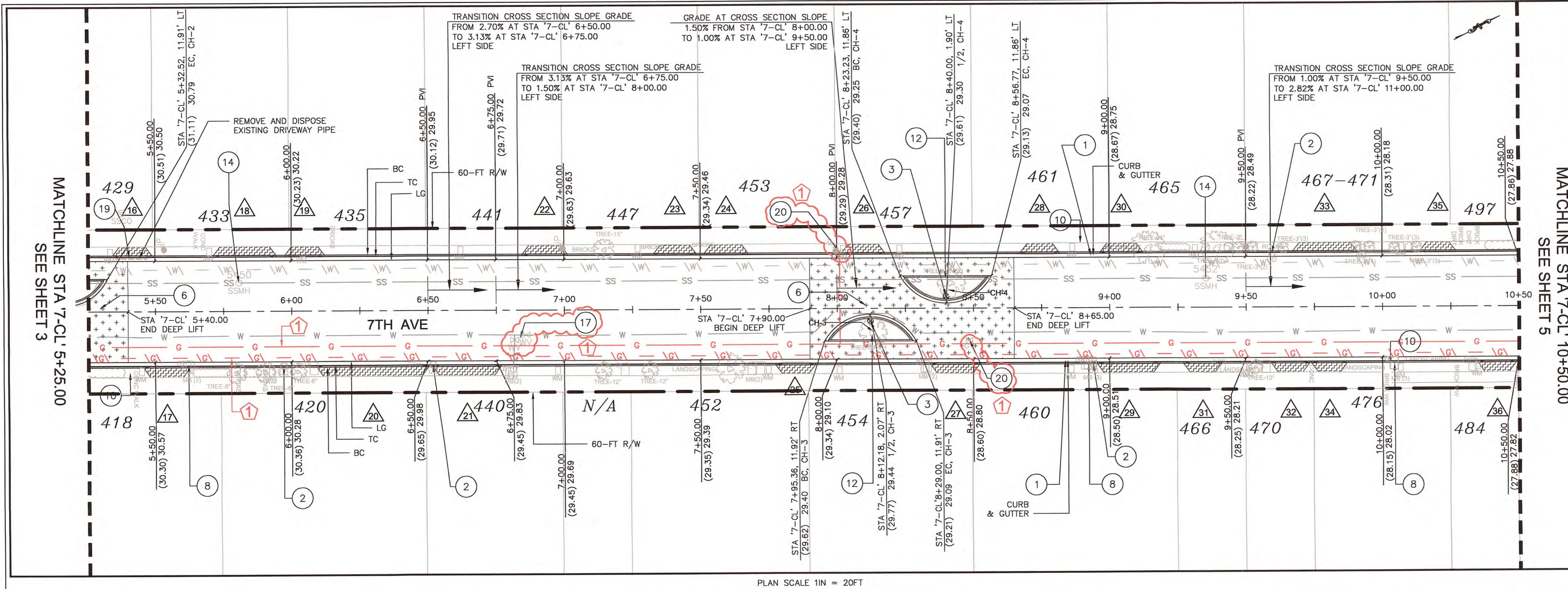
CHICANE CURVE TABLE			
CURVE	LENGTH	RADIUS	DELTA
CH-3	40.87'	19.29'	121° 25' 49"
CH-4	40.95'	19.10'	122° 52' 09"

* CURVE TABLE DATA IS BASED ON PROPOSED LIP OF GUTTER

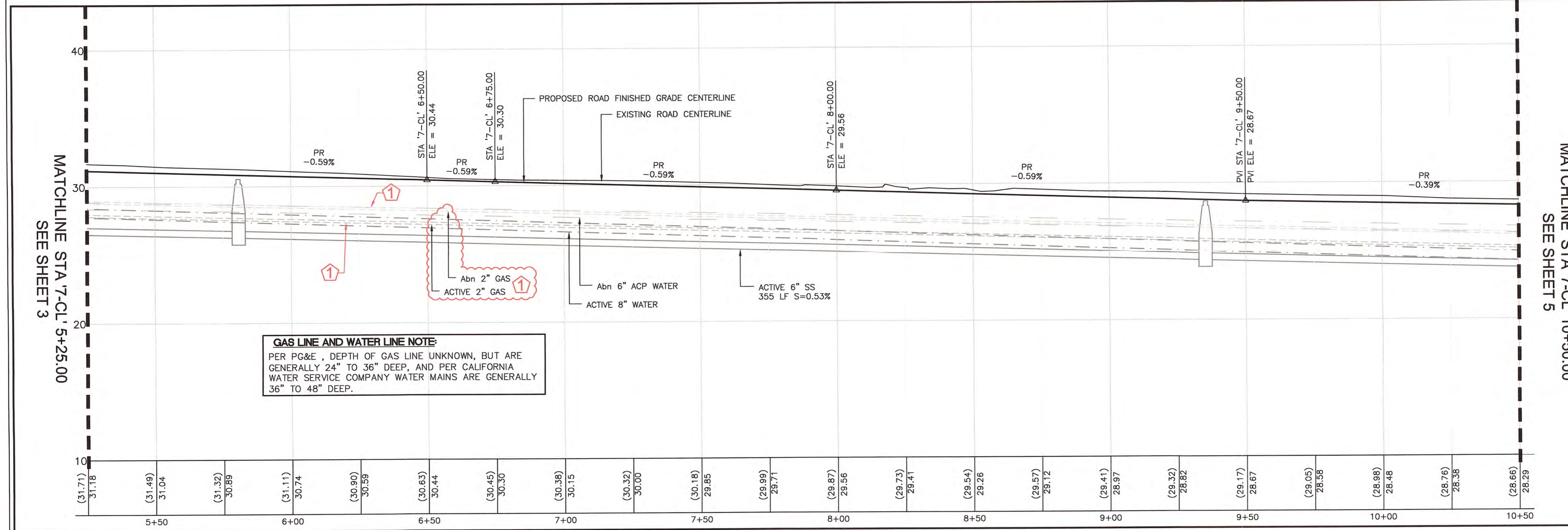
LEGEND:

- 1 REMOVE AND CONSTRUCT CONCRETE CURB AND GUTTER (TYP)
- 2 INSTALL UNDERDRAIN
- 3 INSTALL CLASS 1 FLEX POST OBJECT MARKER
- 4 INSTALL SIDEWALK CURB AND GUTTER UNDERDRAIN
- 5 REMOVE AND RESET EXISTING ROADSIDE SIGNS
- 6 CONSTRUCT AC 0.50" DEEP LIFT (TYPE "B" 3/4" MAXIMUM MEDIUM GRADING); PARK ROAD GRID DATA, SEE SHEET 10
- 7 CONSTRUCT CONCRETE 4' WIDE VALLEY GUTTER AT STREET INTERSECTION
- 8 INSTALL TEMPORARY MAILBOX
- 9 INSTALL CURB AND VALLEY GUTTER TRANSITION
- 10 REMOVE EX AND CONSTRUCT NEW CONCRETE CURB AND GUTTER AT EXISTING SIDEWALK
- 11 REMOVE EX AND CONSTRUCT NEW CONCRETE ROUNDABOUTS
- 12 REMOVE EX AND CONSTRUCT NEW CONCRETE CHICANES AND CURB AND GUTTER
- 13 REMOVE EX AND CONSTRUCT NEW CONCRETE CHICANES WITH ROCK SWALE AND FRENCH DRAIN; REMOVE TREES AT CHICANES NEAR 512, 524 AND 537 7TH AVENUE
- 14 ADJUST SANITARY SEWER MANHOLE TO GRADE
- 15 TRANSITION FROM VALLEY GUTTER TO CURB AND GUTTER
- 16 INSTALL ACCESS RAMP
- 17 ADJUST CALIFORNIA WATER COMPANY VALVE CASING, COVER, AND FRAME (BY OTHERS)
- 18 INTERSECTION OF 7TH AVENUE AND EDISON WAY PLAN AND GRID DATA; SEE SHEET 10
- 19 REMOVE AND DISPOSE EXISTING DRIVEWAY UNDERDRAIN PIPE
- 20 ADJUST PACIFIC GAS AND ELECTRIC COMPANY VALVE CASING, COVER AND FRAME (AS DIRECTED BY THE ENGINEER)
- 21 EXISTING GAS LINE FROM STA '7-CL' 1+174.66 TO STA '7-CL' 12+30.11 IS ANTICIPATED TO BE ABANDONED AND RELOCATED AS SHOWN; CONTRACTOR TO VERIFY

NOTE: REMOVE AND REGRADE ALL EXISTING WALKWAY FROM TOP OF CURB TO EXISTING FACE OF WALK OR AS DIRECTED BY THE ENGINEER AND REPLACE IN KIND. SEE



PLAN SCALE 1IN = 20FT



GAS LINE AND WATER LINE NOTE:
 PER PG&E, DEPTH OF GAS LINE UNKNOWN, BUT ARE GENERALLY 24" TO 36" DEEP, AND PER CALIFORNIA WATER SERVICE COMPANY WATER MAINS ARE GENERALLY 36" TO 48" DEEP.

LEGEND:

- SD STORM DRAIN LINE (EX)
- SD STORM DRAIN LINE (EX) PROFILE
- SS SANITARY SEWER LINE "ACTIVE"
- SS SANITARY SEWER LINE "ACTIVE" PROFILE
- WATER LINE "ACTIVE"
- WATER LINE "ACTIVE" PROFILE
- ACP WATER LINE (Abn)
- ACP WATER LINE (Abn) PROFILE
- GAS LINE (Abn) PROFILE
- GAS LINE "ACTIVE" PROFILE
- JOINT COMMUNICATION LINE (EX)
- JOINT COMMUNICATION LINE (EX) PROFILE
- RIGHT OF WAY
- NATIVE BACKFILL
- CLASS 2 AGGREGATE BASE - AB (CL. 2) (GRAVEL)
- CLASS 3 CONCRETE
- MISCELLANEOUS ASPHALT CONCRETE
- DEEP LIFT AREAS (0.50" DEEP ASPHALT CONCRETE)
- ROCK SWALE AND FRENCH DRAIN

CENTERLINE PROFILE SCALE
 1IN = 20FT HORIZONTAL
 1IN = 4FT VERTICAL

UPDATES:
 1.) HATCH PATTERNS DARKNESS ADJUSTED TO MATCH THE PLAN AND LEGEND
 2.) "ASPHALT CONCRETE" LABEL CHANGED TO "MISCELLANEOUS ASPHALT CONCRETE" LABEL



REVISION	DATE	DESIGNED BY: JS	RECONSTRUCTION OF SEVENTH (7TH) AVENUE	SCALE: 1-IN = 20-FT
1	03-15-18, ADDENDUM 2	CHECKED BY: WN		DATE: 02-09-2018
		DRAWN BY: JS		FILE NO.: 1/4957
JAMES C. PORTER, DIRECTOR OF PUBLIC WORKS SAN MATEO COUNTY			555 COUNTY CENTER, 5th FLOOR REDWOOD CITY, CALIFORNIA 94063	
				4 (REV) SHEET 4 OF 15

FOR REDUCED PLANS ORIGINAL SCALE IS IN INCHES

FILENAME: F:\USERS\DESIGN\CED\4957000\DWGS\SHEETS\4957003-7.DWG (E4957004)



APPROVED:

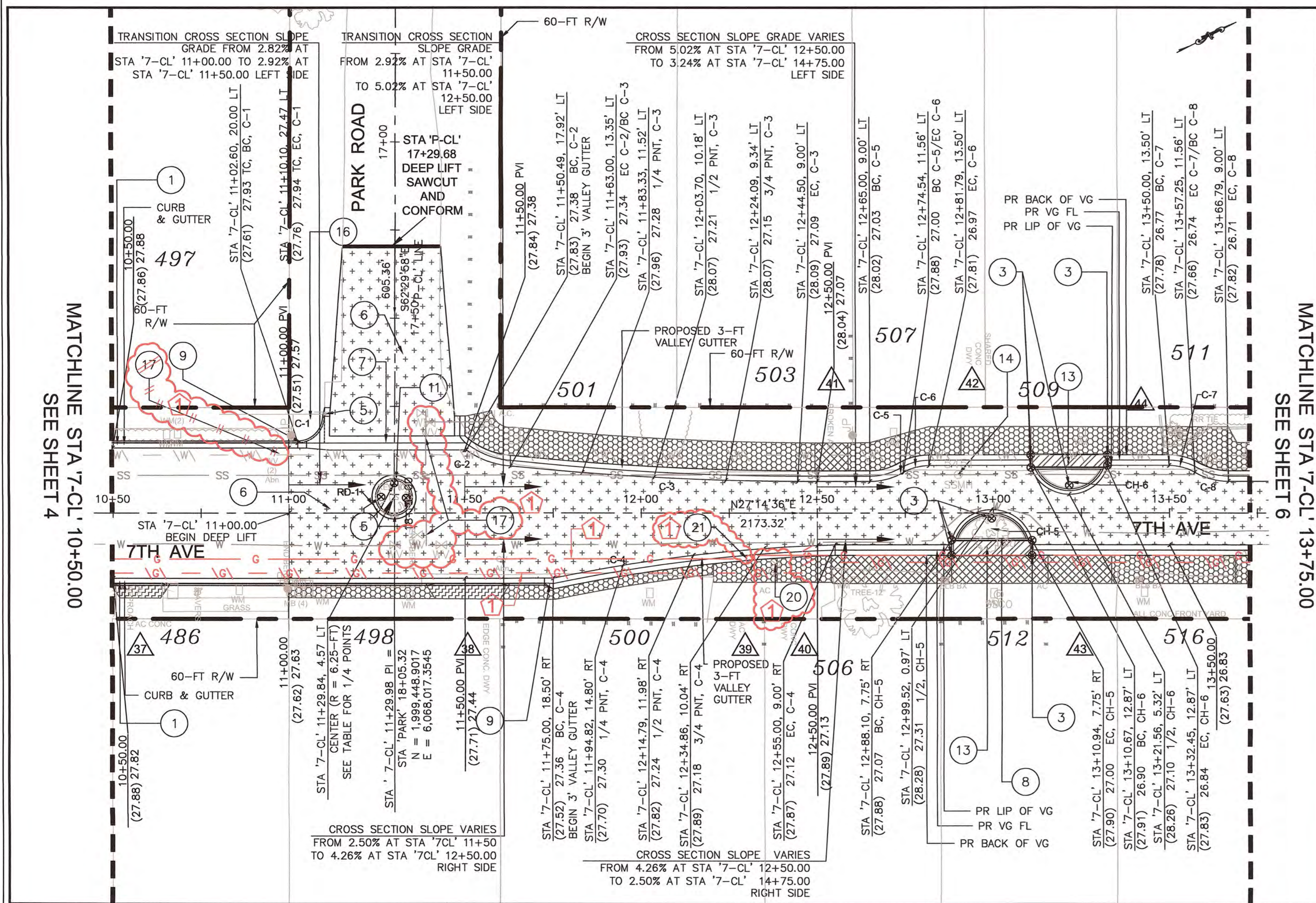
DATE: FEBRUARY 9, 2018

JAMES C. PORTER, DIRECTOR OF PUBLIC WORKS
R. C. E. # 48056 / EXPIRES 12-31-2019

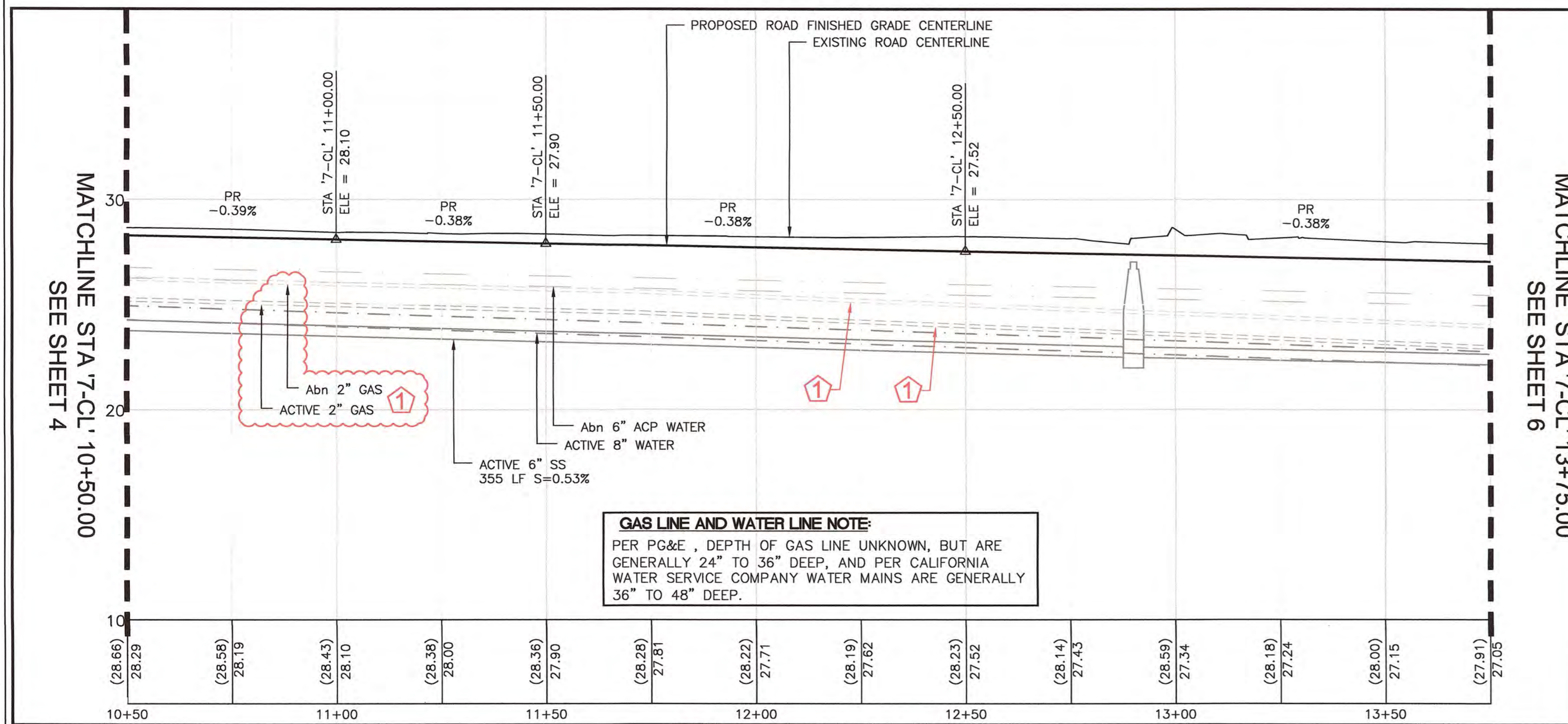
ADDENDUM NO. 2

DATE: MARCH 15, 2018

JAMES C. PORTER, DIRECTOR OF PUBLIC WORKS
R. C. E. # 48056 / EXPIRES 12-31-2019



PLAN SCALE 1IN = 20FT



GAS LINE AND WATER LINE NOTE:
PER PG&E, DEPTH OF GAS LINE UNKNOWN, BUT ARE GENERALLY 24" TO 36" DEEP, AND PER CALIFORNIA WATER SERVICE COMPANY WATER MAINS ARE GENERALLY 36" TO 48" DEEP.

CENTERLINE PROFILE SCALE
1IN = 20FT HORIZONTAL
1IN = 4FT VERTICAL

CURVE	LENGTH	RADIUS	DELTA
C-1	11.75'	7.50'	89° 44' 34"
C-2	13.48'	24.60'	31° 24' 04"
C-3	81.65'	835.49'	05° 35' 57"
C-4	80.67'	455.47'	10° 08' 52"
C-5	9.99'	19.08'	30° 00' 00"
C-6	7.60'	14.51'	29° 59' 59"
C-7	7.60'	14.51'	30° 00' 00"
C-8	9.99'	19.08'	30° 00' 00"
CH-5	30.88'	11.84'	149° 24' 46"
CH-6	28.20'	11.63'	138° 57' 58"
RD-1		6.50'	

* RD-1, CENTER AT STA 7-CL 11+29.84, 4.57 LT
CURVE TABLE DATA IS BASED ON PROPOSED LIP OF GUTTER, EXCEPT C-1 BASED ON PROPOSED TOP OF CURB

LEGEND:

- SD STORM DRAIN LINE (EX)
- SD STORM DRAIN LINE (EX) PROFILE
- SS SANITARY SEWER LINE "ACTIVE"
- SS SANITARY SEWER LINE "ACTIVE" PROFILE
- W WATER LINE "ACTIVE"
- W WATER LINE "ACTIVE" PROFILE
- ACP WATER LINE (Abn)
- ACP WATER LINE (Abn) PROFILE

- GAS LINE (Abn) PROFILE
- GAS LINE "ACTIVE" PROFILE

- JOINT COMMUNICATION LINE (EX)
- JOINT COMMUNICATION LINE (EX) PROFILE

--- RIGHT OF WAY

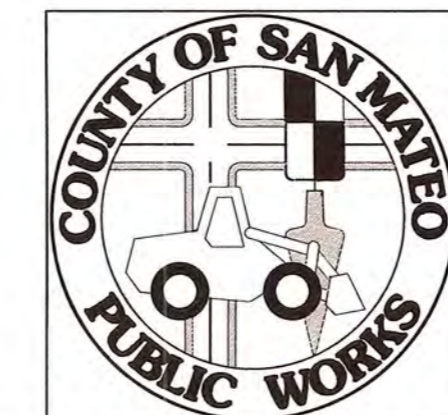
- NATIVE BACKFILL
- CLASS 2 AGGREGATE BASE - AB (CL. 2)
- CLASS 3 CONCRETE
- MISCELLANEOUS ASPHALT CONCRETE
- DEEP LIFT AREAS (0.50' DEEP ASPHALT CONCRETE)
- ROCK SWALE AND FRENCH DRAIN

UPDATES:
1.) HATCH PATTERNS DARKNESS ADJUSTED TO MATCH THE PLAN AND LEGEND
2.) "ASPHALT CONCRETE" LABEL CHANGED TO "MISCELLANEOUS ASPHALT CONCRETE" LABEL

LEGEND:

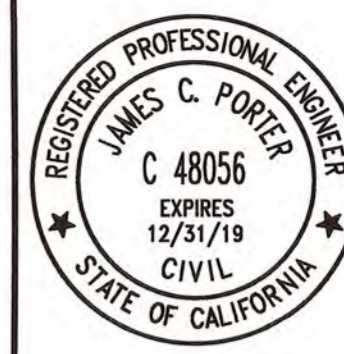
- REMOVE AND CONSTRUCT CONCRETE CURB AND GUTTER (TYP)
- INSTALL UNDERDRAIN
- INSTALL CLASS 1 FLEX POST OBJECT MARKER
- INSTALL SIDEWALK CURB AND GUTTER UNDERDRAIN
- REMOVE AND RESET EXISTING ROADSIDE SIGNS
- CONSTRUCT AC 0.50' DEEP LIFT (TYPE "B" 3/4" MAXIMUM MEDIUM GRADING); PARK ROAD GRID DATA, SEE SHEET 10
- CONSTRUCT CONCRETE 4' WIDE VALLEY GUTTER AT STREET INTERSECTION
- INSTALL TEMPORARY MAILBOX
- INSTALL CURB AND VALLEY GUTTER TRANSITION
- REMOVE EX AND CONSTRUCT NEW CONCRETE CURB AND GUTTER AT EXISTING SIDEWALK
- REMOVE EX AND CONSTRUCT NEW CONCRETE ROUNDABOUTS
- REMOVE EX AND CONSTRUCT NEW CONCRETE CHICANES AND CURB AND GUTTER
- REMOVE EX AND CONSTRUCT NEW CONCRETE CHICANES WITH ROCK SWALE AND FRENCH DRAIN; REMOVE TREES AT CHICANES NEAR 512, 524 AND 537 7TH AVENUE
- ADJUST SANITARY SEWER MANHOLE TO GRADE
- TRANSITION FROM VALLEY GUTTER TO CURB AND GUTTER
- INSTALL ACCESS RAMP
- ADJUST CALIFORNIA WATER COMPANY VALVE CASING, COVER, AND FRAME (BY OTHERS)
- INTERSECTION OF 7TH AVENUE AND EDISON WAY PLAN AND GRID DATA; SEE SHEET 10
- REMOVE AND DISPOSE EXISTING DRIVEWAY UNDERDRAIN PIPE
- ADJUST PACIFIC GAS AND ELECTRIC COMPANY VALVE CASING, COVER AND FRAME (AS DIRECTED BY THE ENGINEER)
- EXISTING GAS LINE FROM STA "7-CL" 1+174.66 TO STA "7-CL" 12+30.11 IS ANTICIPATED TO BE ABANDONED AND RELOCATED AS SHOWN; CONTRACTOR TO VERIFY

NOTE: REMOVE AND REGRADE ALL EXISTING WALKWAY FROM TOP OF CURB TO EXISTING FACE OF WALK OR AS DIRECTED BY THE ENGINEER AND REPLACE IN KIND. SEE



REVISION	DATE	DESIGNED BY:	CHECKED BY:	DRAWN BY:	SCALE: 1-IN = 20-FT
1	03-15-18, ADDENDUM 2	JS	WN	WN	DATE: 02-09-2018
RECONSTRUCTION OF SEVENTH (7TH) AVENUE PLAN AND PROFILE					FILE NO.: 1/4957
JAMES C. PORTER, DIRECTOR OF PUBLIC WORKS SAN MATEO COUNTY			555 COUNTY CENTER, 5th FLOOR REDWOOD CITY, CALIFORNIA 94063		
FOR REDUCED PLANS ORIGINAL SCALE IS IN INCHES					5 (REV) SHEET 5 OF 15

FILENAME: F:\USERS\DESIGN\C3D\E4957000\DWGS\SHEETS\SHEETS\E4957003-7.DWG (E4957005)



APPROVED: _____
 DATE: FEBRUARY 9, 2018
 JAMES C. PORTER, DIRECTOR OF PUBLIC WORKS
 R. C. E. # 48056 / EXPIRES 12-31-2019

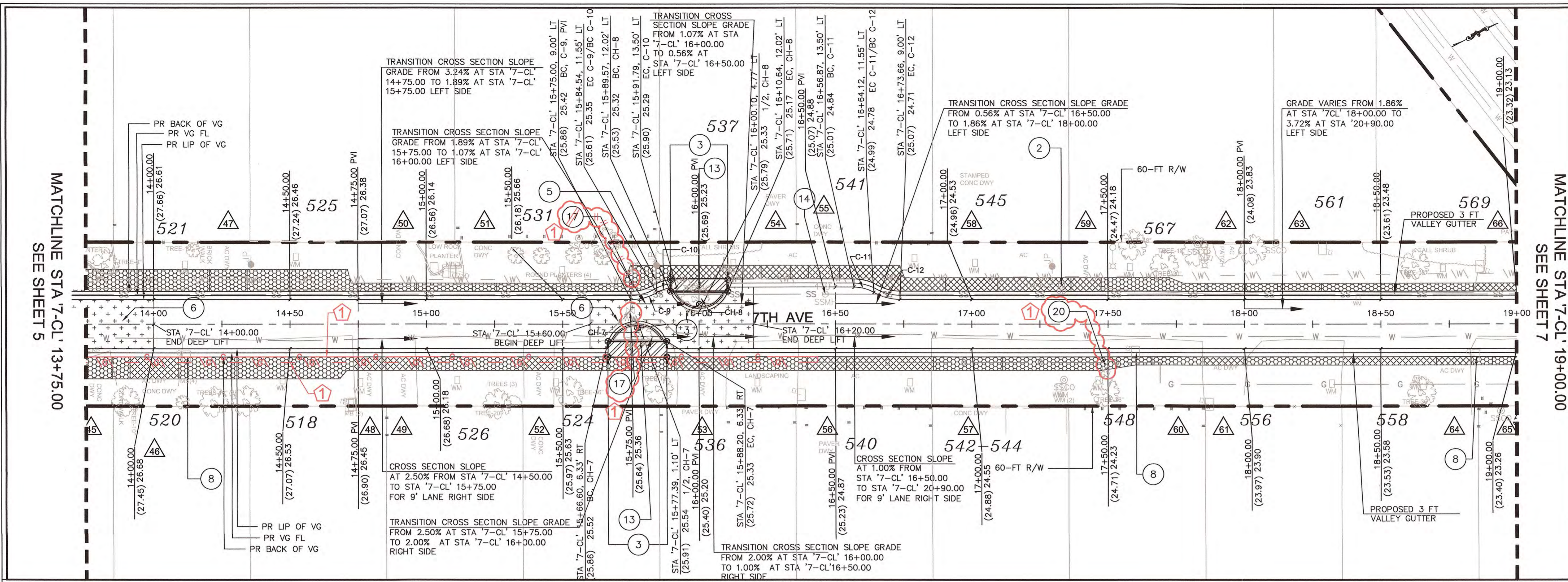
ADDENDUM NO. 2
 DATE: MARCH 15, 2018
 JAMES C. PORTER, DIRECTOR OF PUBLIC WORKS
 R. C. E. # 48056 / EXPIRES 12-31-2019

CURVE TABLE*			
CURVE	LENGTH	RADIUS	DELTA
C-9	9.99'	19.08'	30° 00' 00"
C-10	7.60'	14.51'	29° 59' 32"
C-11	7.60'	14.50'	30° 01' 03"
C-12	9.99'	19.12'	29° 56' 48"
CH-7	27.86'	11.56'	138° 03' 35"
CH-8	27.19'	11.28'	138° 05' 48"

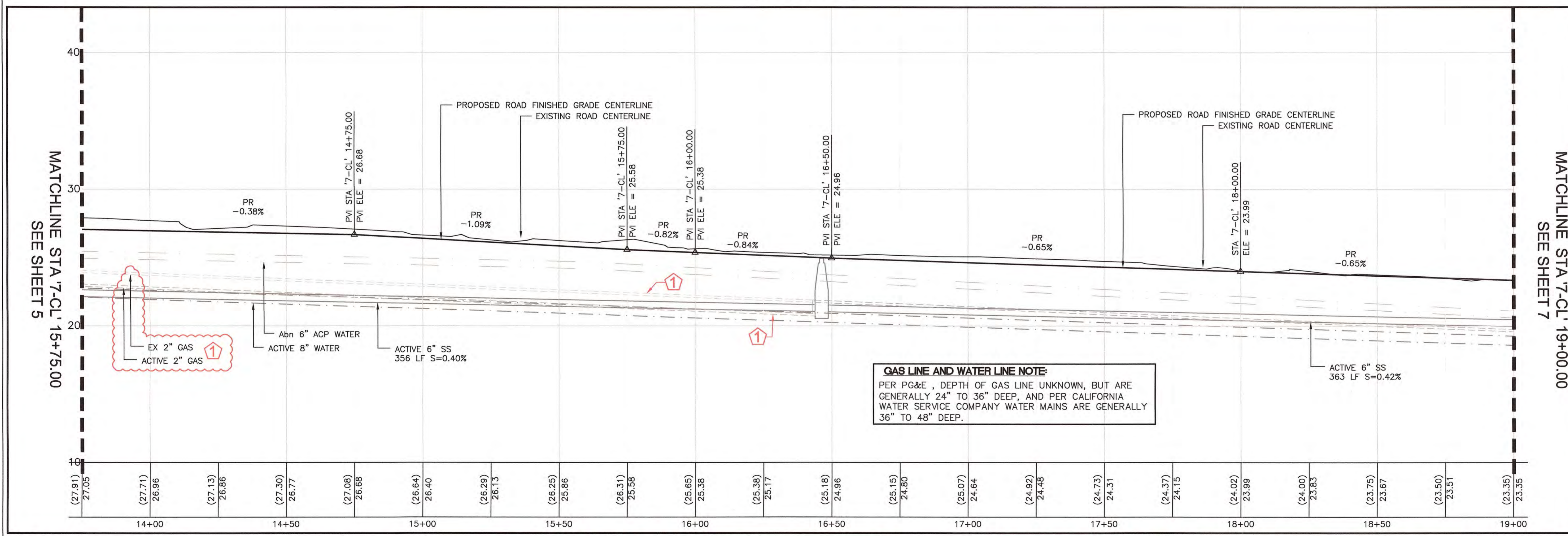
* CURVE TABLE DATA IS BASED ON PROPOSED LIP OF GUTTER

- LEGEND:**
- 1 REMOVE AND CONSTRUCT CONCRETE CURB AND GUTTER (TYP)
 - 2 INSTALL UNDERDRAIN
 - 3 INSTALL CLASS 1 FLEX POST OBJECT MARKER
 - 4 INSTALL SIDEWALK CURB AND GUTTER UNDERDRAIN
 - 5 REMOVE AND RESET EXISTING ROADSIDE SIGNS
 - 6 CONSTRUCT AC 0.50" DEEP LIFT (TYPE "B" 3/4" MAXIMUM MEDIUM GRADING); PARK ROAD GRID DATA, SEE SHEET 10
 - 7 CONSTRUCT CONCRETE 4' WIDE VALLEY GUTTER AT STREET INTERSECTION
 - 8 INSTALL TEMPORARY MAILBOX
 - 9 INSTALL CURB AND VALLEY GUTTER TRANSITION
 - 10 REMOVE EX AND CONSTRUCT NEW CONCRETE CURB AND GUTTER AT EXISTING SIDEWALK
 - 11 REMOVE EX AND CONSTRUCT NEW CONCRETE ROUNDABOUTS
 - 12 REMOVE EX AND CONSTRUCT NEW CONCRETE CHICANES AND CURB AND GUTTER
 - 13 REMOVE EX AND CONSTRUCT NEW CONCRETE CHICANES WITH ROCK SWALE AND FRENCH DRAIN; REMOVE TREES AT CHICANES NEAR 512, 524 AND 537 7TH AVENUE
 - 14 ADJUST SANITARY SEWER MANHOLE TO GRADE
 - 15 TRANSITION FROM VALLEY GUTTER TO CURB AND GUTTER
 - 16 INSTALL ACCESS RAMP
 - 17 ADJUST CALIFORNIA WATER COMPANY VALVE CASING, COVER, AND FRAME (BY OTHERS)
 - 18 INTERSECTION OF 7TH AVENUE AND EDISON WAY PLAN AND GRID DATA; SEE SHEET 10
 - 19 REMOVE AND DISPOSE EXISTING DRIVEWAY UNDERDRAIN PIPE
 - 20 ADJUST PACIFIC GAS AND ELECTRIC COMPANY VALVE CASING, COVER AND FRAME (AS DIRECTED BY THE ENGINEER)
 - 21 EXISTING GAS LINE FROM STA '7-CL' 1+174.66 TO STA '7-CL' 12+30.11 IS ANTICIPATED TO BE ABANDONED AND RELOCATED AS SHOWN; CONTRACTOR TO VERIFY

NOTE: REMOVE AND REGRADE ALL EXISTING WALKWAY FROM TOP OF CURB TO EXISTING FACE OF WALK OR AS DIRECTED BY THE ENGINEER AND REPLACE IN KIND. SEE



PLAN SCALE 1IN = 20FT



GAS LINE AND WATER LINE NOTE:
 PER PG&E, DEPTH OF GAS LINE UNKNOWN, BUT ARE GENERALLY 24" TO 36" DEEP, AND PER CALIFORNIA WATER SERVICE COMPANY WATER MAINS ARE GENERALLY 36" TO 48" DEEP.

- LEGEND:**
- SD STORM DRAIN LINE (EX)
 - SD STORM DRAIN LINE (EX) PROFILE
 - SS SANITARY SEWER LINE "ACTIVE"
 - SS SANITARY SEWER LINE "ACTIVE" PROFILE
 - W WATER LINE "ACTIVE"
 - W WATER LINE "ACTIVE" PROFILE
 - Abn ACP WATER LINE (Abn)
 - Abn ACP WATER LINE (Abn) PROFILE
 - EX JOINT COMMUNICATION LINE (EX)
 - EX JOINT COMMUNICATION LINE (EX) PROFILE
 - RIGHT OF WAY

- 1 GAS LINE "ACTIVE" PROFILE
- 2 CENTERLINE PROFILE SCALE
1IN = 20FT HORIZONTAL
1IN = 4FT VERTICAL
- 3 NATIVE BACKFILL
- 4 CLASS 2 AGGREGATE BASE - (CL. 2) (GRAVEL)
- 5 CLASS 3 CONCRETE
- 6 MISCELLANEOUS ASPHALT CONCRETE
- 7 DEEP LIFT AREAS (0.50" DEEP ASPHALT CONCRETE)
- 8 ROCK SWALE AND FRENCH DRAIN

UPDATES:
 1.) HATCH PATTERNS DARKNESS ADJUSTED TO MATCH THE PLAN AND LEGEND
 2.) "ASPHALT CONCRETE" LABEL CHANGED TO "MISCELLANEOUS ASPHALT CONCRETE" LABEL



REVISION	DATE	DESIGNED BY: JS	RECONSTRUCTION OF SEVENTH (7TH) AVENUE	SCALE: 1-IN = 20-FT
1	03-15-18, ADDENDUM 2	CHECKED BY: WN		DATE: 02-09-2018
		DRAWN BY: JS		FILE NO.: 1/4957
JAMES C. PORTER, DIRECTOR OF PUBLIC WORKS SAN MATEO COUNTY			555 COUNTY CENTER, 5th FLOOR REDWOOD CITY, CALIFORNIA 94063	
FOR REDUCED PLANS ORIGINAL SCALE 15 IN INCHES				6 (REV) SHEET 6 OF 15



APPROVED:

DATE: FEBRUARY 9, 2018

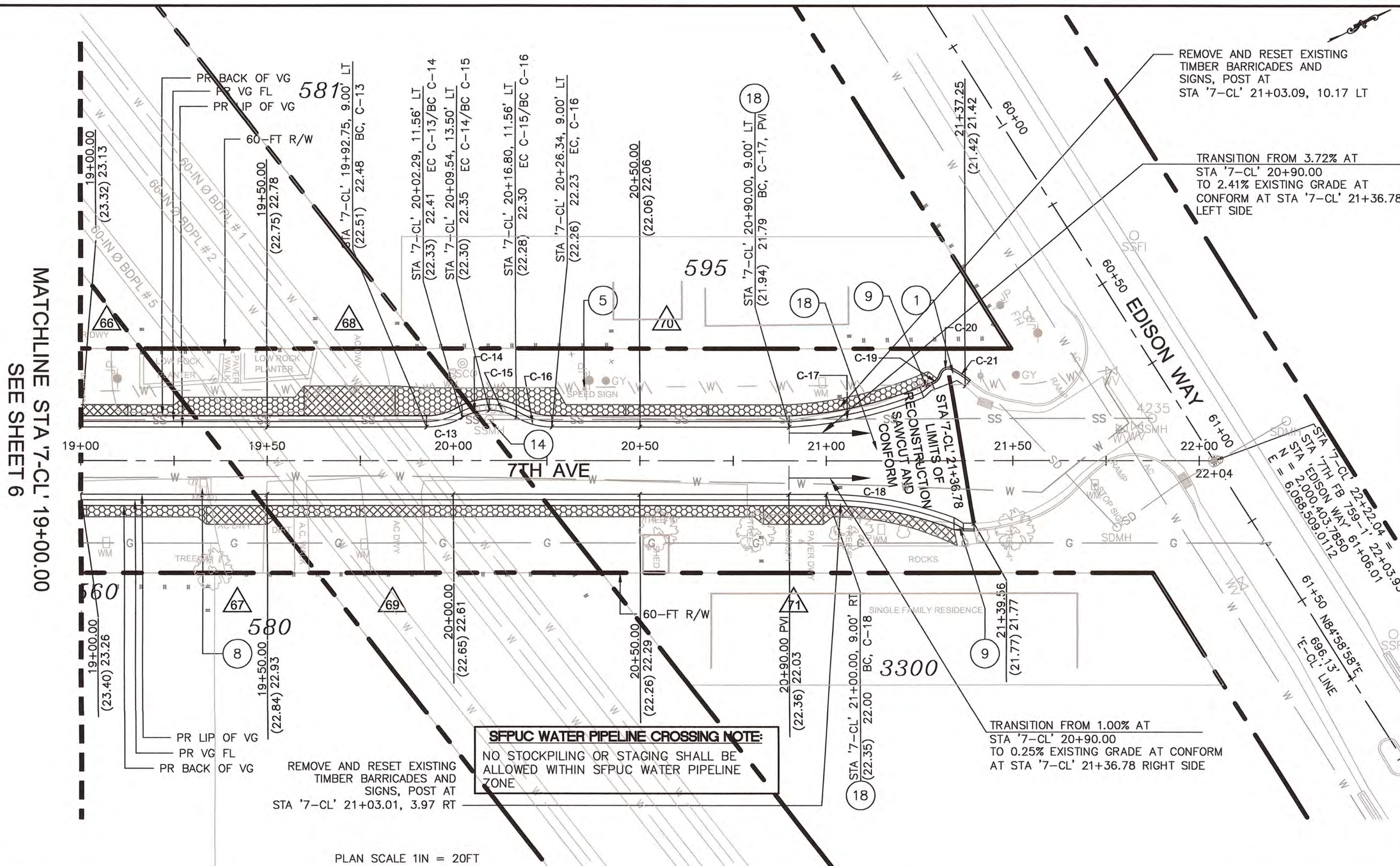
JAMES C. PORTER, DIRECTOR OF PUBLIC WORKS
R. C. E. # 48056 / EXPIRES 12-31-2019

ADDENDUM NO. 2

DATE: MARCH 15, 2018

JAMES C. PORTER, DIRECTOR OF PUBLIC WORKS
R. C. E. # 48056 / EXPIRES 12-31-2019

MATCHLINE STA '7-CL' 19+00.00
SEE SHEET 6



PLAN SCALE 1IN = 20FT

CURVE TABLE*

CURVE	LENGTH	RADIUS	DELTA
C-13	9.99'	19.07'	30° 01' 22"
C-14	7.60'	14.51'	29° 59' 59"
C-15	14.51'	14.51'	30° 00' 00"
C-16	9.99'	19.08'	30° 00' 00"
C-17	37.18'	110.45'	19° 17' 02"
C-18	35.01'	94.19'	21° 17' 49"
C-19	3.57'	3.64'	56° 13' 50"
C-20	3.71'	1.96'	108° 22' 47"
C-21	5.53'	40.43'	7° 22' 47"

* CURVE TABLE DATA IS BASED ON PROPOSED LIP OF GUTTER FOR CURVES C-13 TO C-18. CURVES C-19, C-20 AND C-21 BASED ON PROPOSED TOP OF CURB.

LEGEND:

- SD STORM DRAIN LINE (EX)
- SD STORM DRAIN LINE (EX) PROFILE
- SS SANITARY SEWER LINE "ACTIVE"
- SS SANITARY SEWER LINE "ACTIVE" PROFILE
- W WATER LINE "ACTIVE"
- W WATER LINE "ACTIVE" PROFILE
- ACP WATER LINE (Abn)
- ACP WATER LINE (Abn) PROFILE
- JT JOINT COMMUNICATION LINE (EX)
- JT JOINT COMMUNICATION LINE (EX) PROFILE
- RIGHT OF WAY

- Native Backfill
- Class 2 Aggregate Base - AB (CL. 2) (GRAVEL)
- Class 3 Concrete
- Miscellaneous Asphalt Concrete
- Deep Lift Areas (0.50' Deep Asphalt Concrete)
- Rock Swale and French Drain

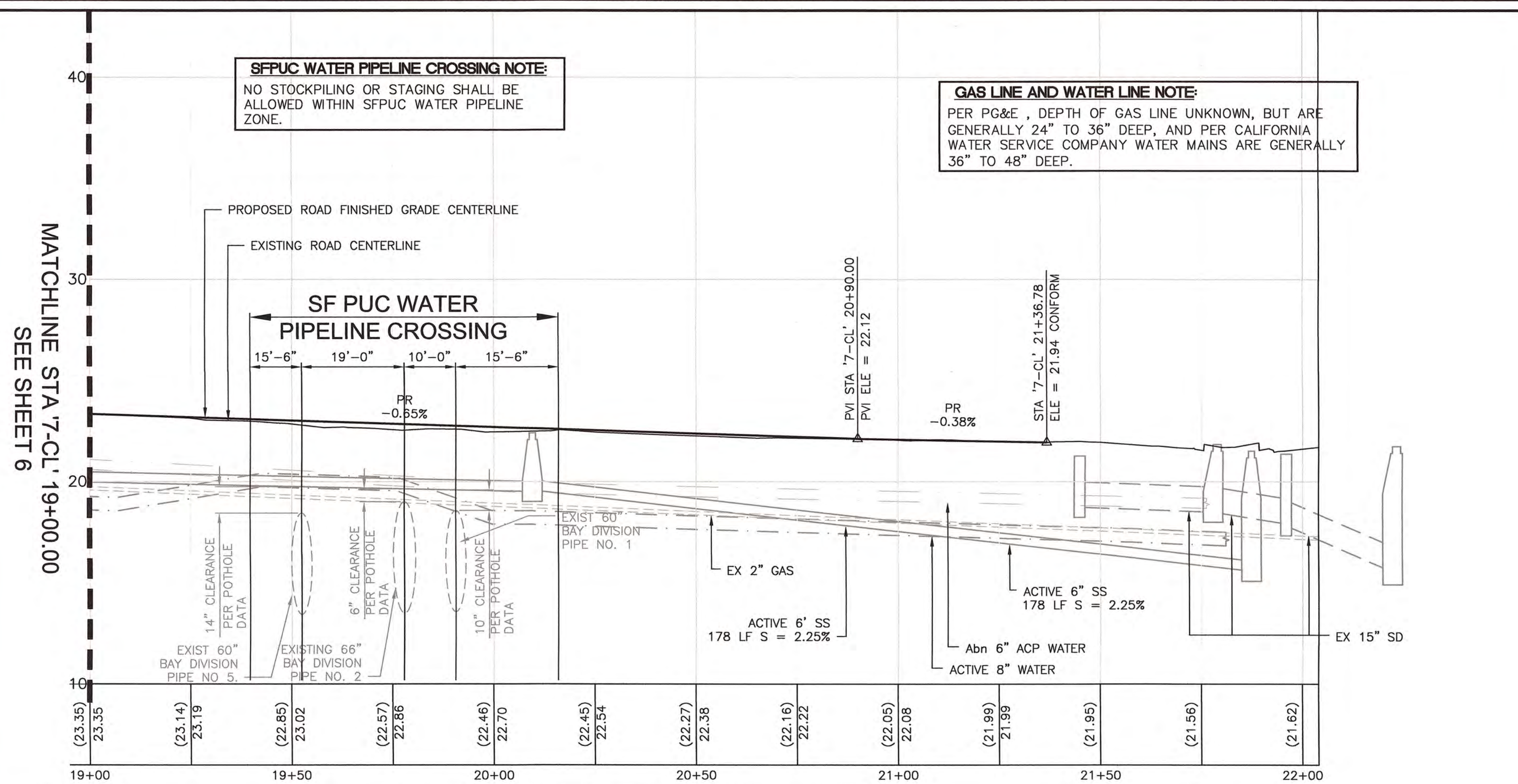
UPDATES:
1.) HATCH PATTERNS DARKNESS ADJUSTED TO MATCH THE PLAN AND LEGEND
2.) "ASPHALT CONCRETE" LABEL CHANGED TO "MISCELLANEOUS ASPHALT CONCRETE" LABEL

LEGEND:

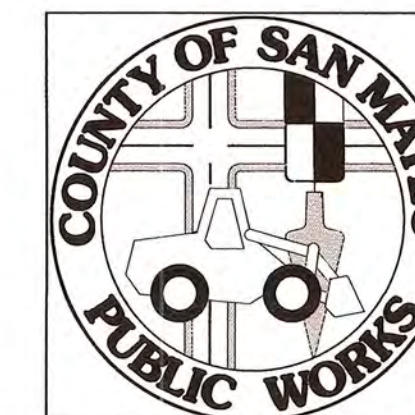
- 1 REMOVE AND CONSTRUCT CONCRETE CURB AND GUTTER (TYP)
- 2 INSTALL UNDERDRAIN
- 3 INSTALL CLASS 1 FLEX POST OBJECT MARKER
- 4 INSTALL SIDEWALK CURB AND GUTTER UNDERDRAIN
- 5 REMOVE AND RESET EXISTING ROADSIDE SIGNS
- 6 CONSTRUCT AC 0.50' DEEP LIFT (TYPE "B" 3/4" MAXIMUM MEDIUM GRADING); PARK ROAD GRID DATA, SEE SHEET 10
- 7 CONSTRUCT CONCRETE 4' WIDE VALLEY GUTTER AT STREET INTERSECTION
- 8 INSTALL TEMPORARY MAILBOX
- 9 INSTALL CURB AND VALLEY GUTTER TRANSITION
- 10 REMOVE EX AND CONSTRUCT NEW CONCRETE CURB AND GUTTER AT EXISTING SIDEWALK
- 11 REMOVE EX AND CONSTRUCT NEW CONCRETE ROUNDABOUTS
- 12 REMOVE EX AND CONSTRUCT NEW CONCRETE CHICANES AND CURB AND GUTTER
- 13 REMOVE EX AND CONSTRUCT NEW CONCRETE CHICANES WITH ROCK SWALE AND FRENCH DRAIN; REMOVE TREES AT CHICANES NEAR 512, 524 AND 537 7TH AVENUE
- 14 ADJUST SANITARY SEWER MANHOLE TO GRADE
- 15 TRANSITION FROM VALLEY GUTTER TO CURB AND GUTTER
- 16 INSTALL ACCESS RAMP
- 17 ADJUST CALIFORNIA WATER COMPANY VALVE CASING, COVER, AND FRAME (BY OTHERS)
- 18 INTERSECTION OF 7TH AVENUE AND EDISON WAY PLAN AND GRID DATA; SEE SHEET 10
- 19 REMOVE AND DISPOSE EXISTING DRIVEWAY UNDERDRAIN PIPE
- 20 ADJUST PACIFIC GAS AND ELECTRIC COMPANY VALVE CASING, COVER AND FRAME (AS DIRECTED BY THE ENGINEER)
- 21 EXISTING GAS LINE FROM STA '7-CL' 1+174.66 TO STA '7-CL' 124-30.11 IS ANTICIPATED TO BE ABANDONED AND RELOCATED AS SHOWN; CONTRACTOR TO VERIFY

NOTE: REMOVE AND REGRADE ALL EXISTING WALKWAY FROM TOP OF CURB TO EXISTING FACE OF WALK OR AS DIRECTED BY THE ENGINEER AND REPLACE IN KIND. SEE

MATCHLINE STA '7-CL' 19+00.00
SEE SHEET 6



CENTERLINE PROFILE SCALE
1IN = 20FT HORIZONTAL
1IN = 4FT VERTICAL



REVISION	DATE	DESIGNED BY:	CHECKED BY:	DRAWN BY:	SCALE:
1	03-15-18, ADDENDUM 2	JS	WN	JN	1-IN = 20-FT

RECONSTRUCTION OF SEVENTH (7TH) AVENUE
DATE: 02-09-2018
FILE NO.: 1/4957

JAMES C. PORTER, DIRECTOR OF PUBLIC WORKS
SAN MATEO COUNTY

555 COUNTY CENTER, 5th FLOOR
REDWOOD CITY, CALIFORNIA 94063

FOR REDUCED PLANS ORIGINAL SCALE IS IN INCHES

0 1 2 3 4

7 (REV)
SHEET 7 OF 15

FILENAME: F:\USERS\DESIGN\C3D\E4857000\DWGS\SHEETS\E4857003-7.DWG (E4857007)



APPROVED:

DATE: FEBRUARY 9, 2018

JAMES C. PORTER, DIRECTOR OF PUBLIC WORKS
R. C. E. # 48056 / EXPIRES 12-31-2019

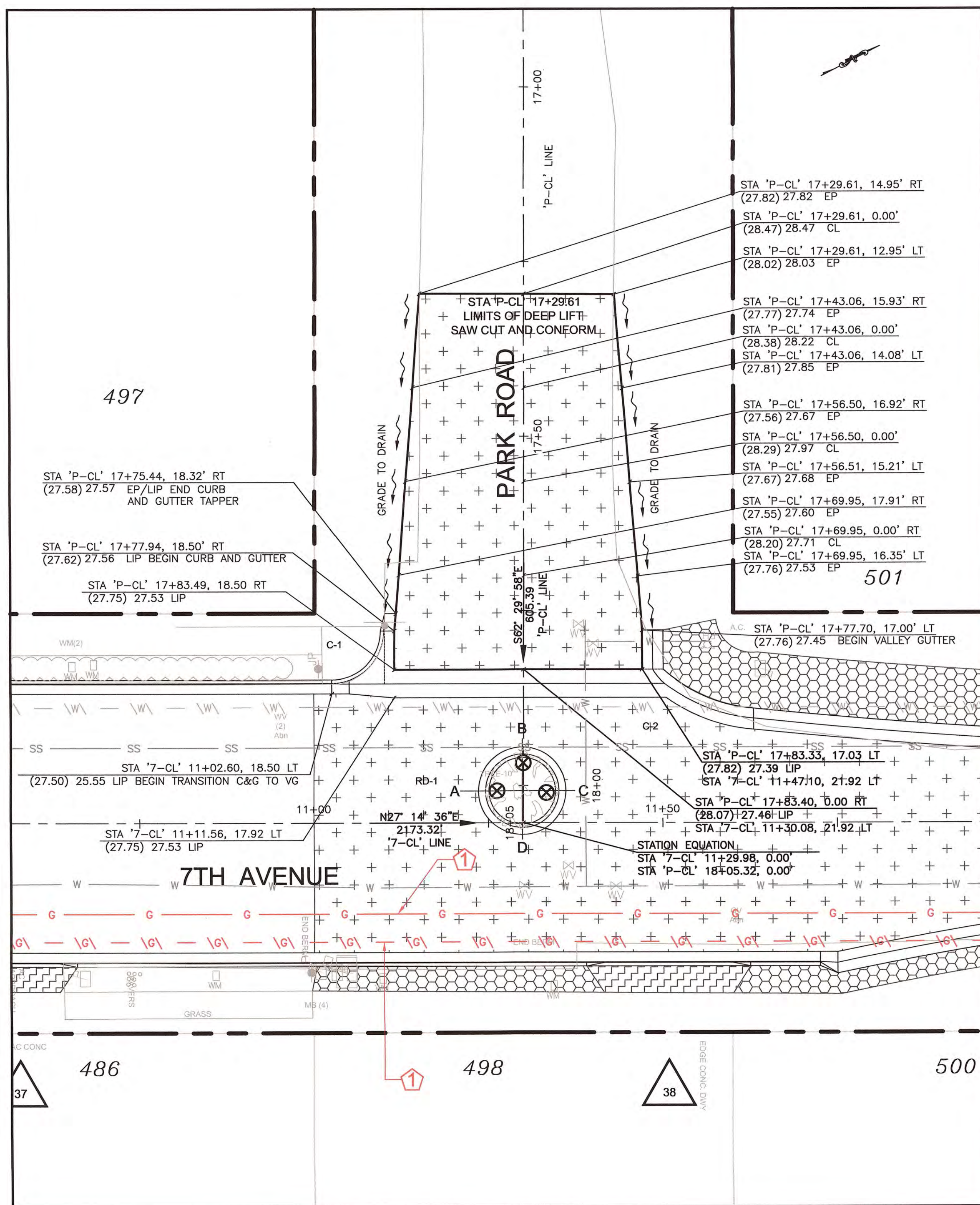
1 ADDENDUM NO. 2

DATE: MARCH 15, 2018

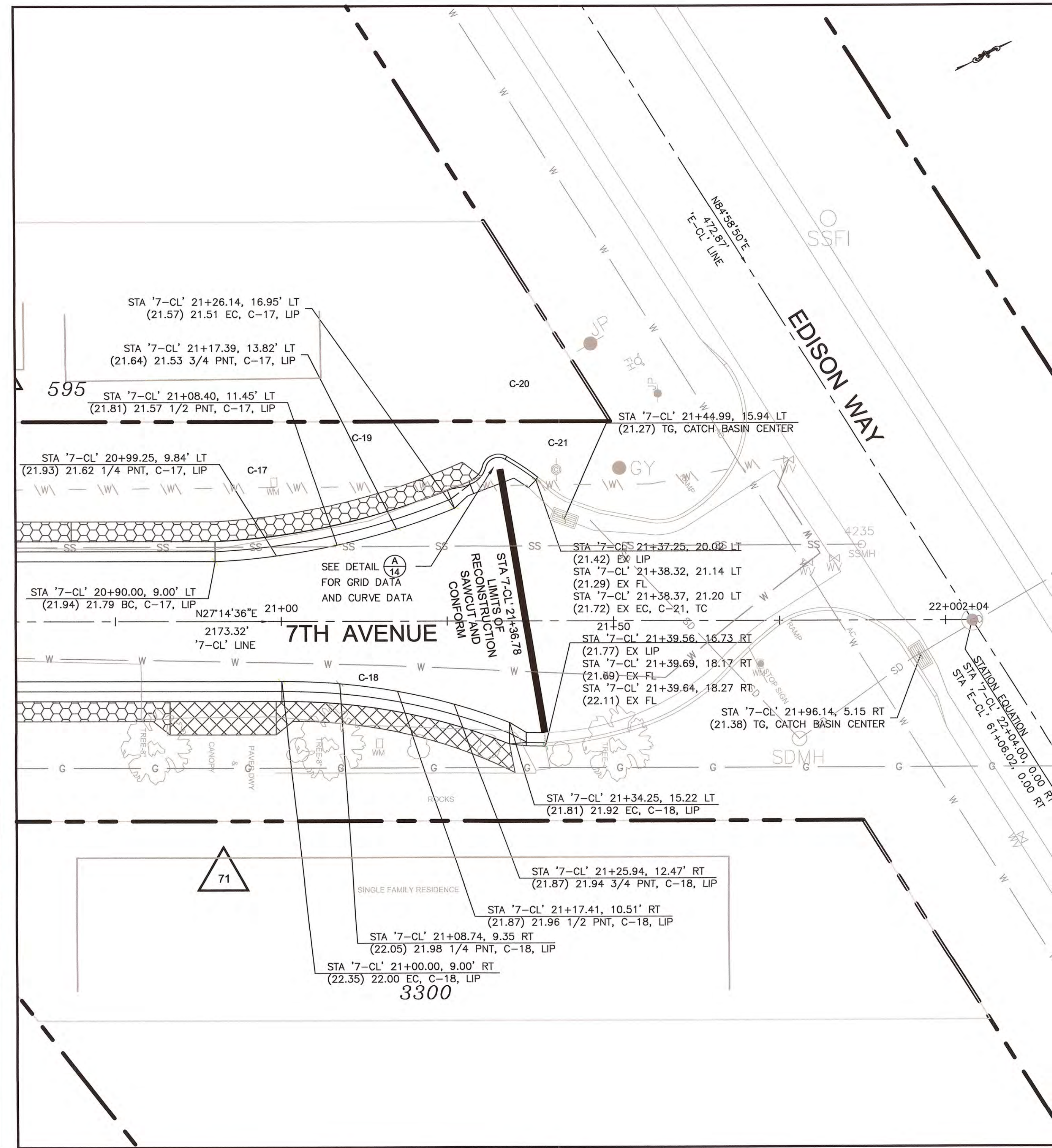
JAMES C. PORTER, DIRECTOR OF PUBLIC WORKS
R. C. E. # 48056 / EXPIRES 12-31-2019

LEGEND:

- RIGHT OF WAY
 - DEEP LIFT AREAS (0.50' DEEP ASPHALT CONCRETE)
 - NATIVE BACKFILL
 - CLASS 2 AGGREGATE BASE - AB (CL. 2) (GRAVEL)
 - ASPHALT CONCRETE
 - ROCK SWALE AND FRENCH DRAIN
- UPDATES:
- 1) HATCH PATTERNS DARKNESS ADJUSTED TO MATCH THE PLAN AND LEGEND
 - 2) "ASPHALT CONCRETE" LABEL CHANGED TO "MISCELLANEOUS ASPHALT CONCRETE" LABEL
- GRADE DRAINAGE FLOW DIRECTION



INTERSECTION OF 7TH AVENUE AND PARK ROAD
PLAN AND GRID DATA
SCALE 1" = 10FT

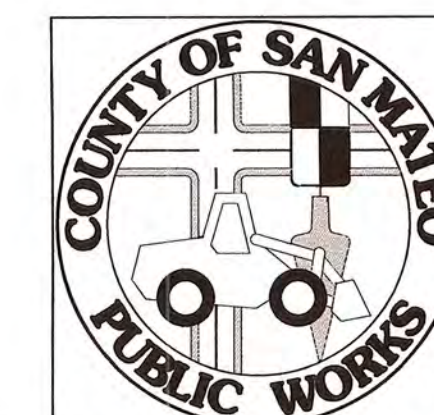


INTERSECTION OF 7TH AVENUE AND EDISON WAY
PLAN AND GRID DATA
SCALE 1" = 10FT

ROUNDABOUT (RD-1) GRID DATA

LOCATION	LIP	OFFSET	ELE FG	ELE (EX)	TC	OFFSET	ELE FG	ELE (EX)	BC	OFFSET	ELE FG	ELE (EX)
A	STA '7-CL' 11+23.59	4.57 LT	27.87'	(28.28')	STA '7-CL' 11+24.59	4.57 LT	28.37'	(27.98')	STA '7-CL' 11+25.09	4.57 LT	28.37'	(28.33')
B	STA '7-CL' 11+29.84	10.82 LT	27.67'	(28.14')	STA '7-CL' 11+29.84	9.82 LT	28.17'	(28.16')	STA '7-CL' 11+29.84	9.32 LT	28.17'	(28.16')
C	STA '7-CL' 11+36.09	4.57 LT	27.82'	(28.28')	STA '7-CL' 11+35.09	4.57 LT	28.32'	(28.29')	STA '7-CL' 11+34.59	4.57 LT	28.32'	(28.28')
D	STA '7-CL' 11+29.84	1.68 RT	27.94'	(28.32')	STA '7-CL' 11+29.84	0.68 RT	28.44'	(28.37')	STA '7-CL' 11+29.84	0.18 RT	28.44'	(28.35')

ROUNDABOUT (RD-1), CENTER AT STA '7-CL' 11+29.84, 4.57 LT



REVISION	DATE	DESIGNED BY: EHB/JS	RECONSTRUCTION OF SEVENTH (7TH) AVENUE	SCALE: 1IN = 10FT
1	03-15-18, ADDENDUM 2	CHECKED BY: WN	PLAN AND GRID DATA	DATE: 02-09-2018
		DRAWN BY: EHB/JS		FILE NO.: 1/4957
JAMES C. PORTER, DIRECTOR OF PUBLIC WORKS SAN MATEO COUNTY			555 COUNTY CENTER, 5th FLOOR REDWOOD CITY, CALIFORNIA 94063	
FOR REDUCED PLANS ORIGINAL SCALE IS IN INCHES				10 (REV) SHEET 10 OF 15

FILENAME: F:\USERS\DESIGN\4957000\DWG\SHEETS\4957010.DWG (4957010)

